

Datasheet for ABIN2457959

anti-WWTR1 antibody[Go to Product page](#)**1** Image

Overview

Quantity:	100 µL
Target:	WWTR1
Reactivity:	Human, Mouse, Rat
Host:	Rabbit
Clonality:	Polyclonal
Conjugate:	This WWTR1 antibody is un-conjugated
Application:	Western Blotting (WB), ELISA

Product Details

Immunogen:	Antibody produced in rabbits immunized with a synthetic peptide corresponding a region of human WWTR1.
Purification:	Antibody is purified by peptide affinity chromatography method.

Target Details

Target:	WWTR1
Alternative Name:	WWTR1 (WWTR1 Products)
Background:	TAZ (transcriptional coactivator with PDZ-binding motif), also known as WW domain containing transcription regulator 1 (WWTR1), is a member of the bicoid sub-family of homeodomain-containing transcription factors. TAZ is a 14-3-3 binding protein that co-activates Runx2-dependent gene transcription while repressing PPAR-gamma-dependent gene transcription. TAZ has been reported to be a modulator of mesenchymal stem cell differentiation. TAZ may

Target Details

also play a role in brain and sensory organ development. A similar protein in mice is required for proper forebrain development. Two transcript variants encoding distinct isoforms have been identified for this gene. Other alternative splice variants may exist, but their full length sequences have not been determined.

Molecular Weight: 44 kDa

Gene ID: 25937

NCBI Accession: [NP_056287](#)

UniProt: [Q9GZV5](#)

Pathways: [Regulation of Lipid Metabolism by PPARalpha](#)

Application Details

Application Notes: WWTR1 antibody can be used for detection of WWTR1 by ELISA at 1:62500. WWTR1 antibody can be used for detection of WWTR1 by western blot at 1 µg/mL, and HRP conjugated secondary antibody should be diluted 1:50,000 - 100,000.

Restrictions: For Research Use only

Handling

Format: Lyophilized

Reconstitution: Add 50 µL of distilled water. Final antibody concentration is 1 mg/mL.

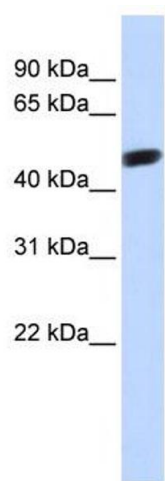
Concentration: 1 mg/mL

Buffer: Antibody is lyophilized in PBS buffer with 2 % sucrose.

Handling Advice: As with any antibody avoid repeat freeze-thaw cycles.

Storage: 4 °C/-20 °C

Storage Comment: For short periods of storage (days) store at 4 °C. For longer periods of storage, store WWTR1 antibody at -20 °C.



Western Blotting

Image 1.