

Datasheet for ABIN2457969

anti-ZNF391 antibody[Go to Product page](#)**1** Image

Overview

Quantity:	100 µL
Target:	ZNF391
Reactivity:	Human
Host:	Rabbit
Clonality:	Polyclonal
Conjugate:	This ZNF391 antibody is un-conjugated
Application:	Western Blotting (WB), ELISA

Product Details

Immunogen:	Antibody produced in rabbits immunized with a synthetic peptide corresponding a region of human ZNF391.
Purification:	Antibody is purified by peptide affinity chromatography method.

Target Details

Target:	ZNF391
Alternative Name:	ZNF391 (ZNF391 Products)
Background:	ZNF391 belongs to the krueppel C2H2-type zinc-finger protein family. It contains 9 C2H2-type zinc fingers. ZNF391 may be involved in transcriptional regulation.
Molecular Weight:	41 kDa
Gene ID:	346157

Target Details

NCBI Accession: [NP_001070249](#)

UniProt: [Q9UJN7](#)

Application Details

Application Notes: ZNF391 antibody can be used for detection of ZNF391 by ELISA at 1:312500. ZNF391 antibody can be used for detection of ZNF391 by western blot at 1 µg/mL, and HRP conjugated secondary antibody should be diluted 1:50,000 - 100,000.

Restrictions: For Research Use only

Handling

Format: Lyophilized

Reconstitution: Add 50 µL of distilled water. Final antibody concentration is 1 mg/mL.

Concentration: 1 mg/mL

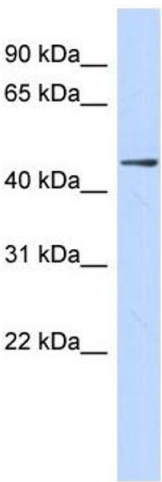
Buffer: Antibody is lyophilized in PBS buffer with 2 % sucrose.

Handling Advice: As with any antibody avoid repeat freeze-thaw cycles.

Storage: 4 °C/-20 °C

Storage Comment: For short periods of storage (days) store at 4 °C. For longer periods of storage, store ZNF391 antibody at -20 °C.

Images



Western Blotting

Image 1.