

Datasheet for ABIN2458031
anti-ZSCAN20 antibody[Go to Product page](#)

1 Image

Overview

Quantity:	100 µL
Target:	ZSCAN20
Reactivity:	Human, Mouse, Rat
Host:	Rabbit
Clonality:	Polyclonal
Conjugate:	This ZSCAN20 antibody is un-conjugated
Application:	Western Blotting (WB), ELISA

Product Details

Immunogen:	Antibody produced in rabbits immunized with a synthetic peptide corresponding a region of human ZSCAN20.
Purification:	Antibody is purified by peptide affinity chromatography method.

Target Details

Target:	ZSCAN20
Alternative Name:	ZSCAN20 (ZSCAN20 Products)
Background:	ZSCAN20 belongs to the krueppel C2H2-type zinc-finger protein family. It contains 10 C2H2-type zinc fingers and 1 SCAN box domain. ZSCAN20 may be involved in transcriptional regulation.
Molecular Weight:	117 kDa
Gene ID:	7579

Target Details

NCBI Accession:	NP_660281
UniProt:	P17040
Pathways:	Chromatin Binding

Application Details

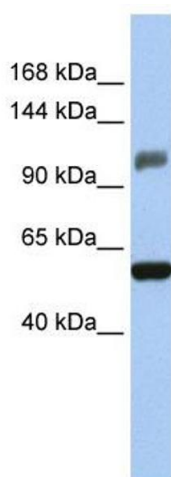
Application Notes:	ZSCAN20 antibody can be used for detection of ZSCAN20 by ELISA at 1:62500. ZSCAN20 antibody can be used for detection of ZSCAN20 by western blot at 1 µg/mL, and HRP conjugated secondary antibody should be diluted 1:50,000 - 100,000.
--------------------	--

Restrictions:	For Research Use only
---------------	-----------------------

Handling

Format:	Lyophilized
Reconstitution:	Add 50 µL of distilled water. Final antibody concentration is 1 mg/mL.
Concentration:	1 mg/mL
Buffer:	Antibody is lyophilized in PBS buffer with 2 % sucrose.
Handling Advice:	As with any antibody avoid repeat freeze-thaw cycles.
Storage:	4 °C/-20 °C
Storage Comment:	For short periods of storage (days) store at 4 °C. For longer periods of storage, store ZSCAN20 antibody at -20 °C.

Images



Western Blotting

Image 1.