



Datasheet for ABIN2458093
anti-BTBD2 antibody



[Go to Product page](#)

1 Image

Overview

Quantity:	100 µL
Target:	BTBD2
Reactivity:	Human, Mouse, Rat
Host:	Rabbit
Clonality:	Polyclonal
Conjugate:	This BTBD2 antibody is un-conjugated
Application:	ELISA, Western Blotting (WB)

Product Details

Immunogen:	Antibody produced in rabbits immunized with a synthetic peptide corresponding a region of human BTBD2.
Purification:	Antibody is purified by peptide affinity chromatography method.

Target Details

Target:	BTBD2
Alternative Name:	BTBD2 (BTBD2 Products)
Background:	The C-terminus of BTBD2 binds topoisomerase I. The N-terminus contains a proline-rich region and a BTB/POZ domain (broad-complex, Tramtrack and bric a brac/Pox virus and Zinc finger), both of which are typically involved in protein-protein interactions. Subcellularly, the protein localizes to cytoplasmic bodies. The C-terminus of the protein encoded by this gene binds topoisomerase I. The N-terminus contains a proline-rich region and a BTB/POZ domain (broad-

Target Details

complex, Tramtrack and bric a brac/Pox virus and Zinc finger), both of which are typically involved in protein-protein interactions. Subcellularly, the protein localizes to cytoplasmic bodies.

Molecular Weight: 56 kDa

Gene ID: 55643

NCBI Accession: [NP_060267](#)

UniProt: [Q9BX70](#)

Application Details

Application Notes: BTBD2 antibody can be used for detection of BTBD2 by ELISA at 1:62500. BTBD2 antibody can be used for detection of BTBD2 by western blot at 1 µg/mL, and HRP conjugated secondary antibody should be diluted 1:50,000 - 100,000.

Restrictions: For Research Use only

Handling

Format: Lyophilized

Reconstitution: Add 50 µL of distilled water. Final antibody concentration is 1 mg/mL.

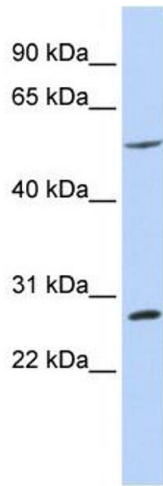
Concentration: 1 mg/mL

Buffer: Antibody is lyophilized in PBS buffer with 2 % sucrose.

Handling Advice: As with any antibody avoid repeat freeze-thaw cycles.

Storage: 4 °C/-20 °C

Storage Comment: For short periods of storage (days) store at 4 °C. For longer periods of storage, store BTBD2 antibody at -20 °C.



Western Blotting

Image 1.