

Datasheet for ABIN2458101

**anti-PRDM8 antibody****1** Image[Go to Product page](#)

## Overview

Quantity:	100 µL
Target:	PRDM8
Reactivity:	Human, Mouse, Rat
Host:	Rabbit
Clonality:	Polyclonal
Conjugate:	This PRDM8 antibody is un-conjugated
Application:	Western Blotting (WB), ELISA

## Product Details

Immunogen:	Antibody produced in rabbits immunized with a synthetic peptide corresponding a region of human PRDM8.
Purification:	Antibody is purified by peptide affinity chromatography method.

## Target Details

Target:	PRDM8
Alternative Name:	PRDM8 ( <a href="#">PRDM8 Products</a> )
Background:	PRDM8 may be involved in transcriptional regulation.
Molecular Weight:	72 kDa
Gene ID:	56978
NCBI Accession:	<a href="#">NP_064611</a>

## Target Details

UniProt: [Q9NQV8](#)

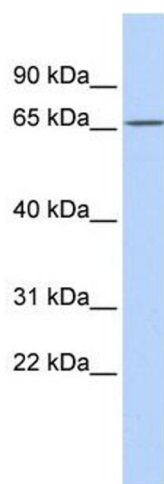
## Application Details

Application Notes:	PRDM8 antibody can be used for detection of PRDM8 by ELISA at 1:312500. PRDM8 antibody can be used for detection of PRDM8 by western blot at 1 µg/mL, and HRP conjugated secondary antibody should be diluted 1:50,000 - 100,000.
Restrictions:	For Research Use only

## Handling

Format:	Lyophilized
Reconstitution:	Add 50 µL of distilled water. Final antibody concentration is 1 mg/mL.
Concentration:	1 mg/mL
Buffer:	Antibody is lyophilized in PBS buffer with 2 % sucrose.
Handling Advice:	As with any antibody avoid repeat freeze-thaw cycles.
Storage:	4 °C/-20 °C
Storage Comment:	For short periods of storage (days) store at 4 °C. For longer periods of storage, store PRDM8 antibody at -20 °C.

## Images



### Western Blotting

Image 1.