

Datasheet for ABIN2458117

anti-WD Repeat Domain 45B (WDR45B) antibody[Go to Product page](#)**1** Image

Overview

Quantity:	100 µL
Target:	WD Repeat Domain 45B (WDR45B)
Reactivity:	Human, Mouse, Rat
Host:	Rabbit
Clonality:	Polyclonal
Conjugate:	Un-conjugated
Application:	Western Blotting (WB), ELISA

Product Details

Immunogen:	Antibody produced in rabbits immunized with a synthetic peptide corresponding a region of human WDR45L.
Purification:	Antibody is purified by peptide affinity chromatography method.

Target Details

Target:	WD Repeat Domain 45B (WDR45B)
Alternative Name:	WDR45L (WDR45B Products)
Background:	WDR45L is a member of the WIPI or SVP1 family of WD40 repeat-containing proteins. The protein contains seven WD40 repeats that are thought to fold into a beta-propeller structure that mediates protein-protein interactions, and a conserved motif for interaction with phospholipids. This gene encodes a member of the WIPI or SVP1 family of WD40 repeat-containing proteins. The protein contains seven WD40 repeats that are thought to fold into a

Target Details

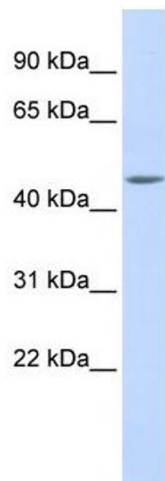
	beta-propeller structure that mediates protein-protein interactions, and a conserved motif for interaction with phospholipids. The human genome contains several pseudogenes of this gene.
Molecular Weight:	38 kDa
Gene ID:	56270
NCBI Accession:	NP_062559
UniProt:	Q5MNZ6

Application Details

Application Notes:	WDR45L antibody can be used for detection of WDR45L by ELISA at 1:62500. WDR45L antibody can be used for detection of WDR45L by western blot at 1 µg/mL, and HRP conjugated secondary antibody should be diluted 1:50,000 - 100,000.
Restrictions:	For Research Use only

Handling

Format:	Lyophilized
Reconstitution:	Add 50 µL of distilled water. Final antibody concentration is 1 mg/mL.
Concentration:	1 mg/mL
Buffer:	Antibody is lyophilized in PBS buffer with 2 % sucrose.
Handling Advice:	As with any antibody avoid repeat freeze-thaw cycles.
Storage:	4 °C/-20 °C
Storage Comment:	For short periods of storage (days) store at 4 °C. For longer periods of storage, store WDR45L antibody at -20 °C.



Western Blotting

Image 1.