

Datasheet for ABIN2458156

anti-BTF3P11 antibody[Go to Product page](#)**1** Image

Overview

Quantity:	100 µL
Target:	BTF3P11
Reactivity:	Human
Host:	Rabbit
Clonality:	Polyclonal
Conjugate:	This BTF3P11 antibody is un-conjugated
Application:	Western Blotting (WB), ELISA

Product Details

Immunogen:	Antibody produced in rabbits immunized with a synthetic peptide corresponding a region of human BTF3L1.
Purification:	Antibody is purified by peptide affinity chromatography method.

Target Details

Target:	BTF3P11
Alternative Name:	BTF3L1 (BTF3P11 Products)
Background:	BTF3L1 is a putative member of the BTF3 family of transcription factors. Transcription of this gene has not yet been documented.
Molecular Weight:	12 kDa
Gene ID:	690

Target Details

NCBI Accession: [NP_001199](#)

UniProt: [Q13890](#)

Application Details

Application Notes: BTF3L1 antibody can be used for detection of BTF3L1 by ELISA at 1:1562500. BTF3L1 antibody can be used for detection of BTF3L1 by western blot at 1 µg/mL, and HRP conjugated secondary antibody should be diluted 1:50,000 - 100,000.

Restrictions: For Research Use only

Handling

Format: Lyophilized

Reconstitution: Add 50 µL of distilled water. Final antibody concentration is 1 mg/mL.

Concentration: 1 mg/mL

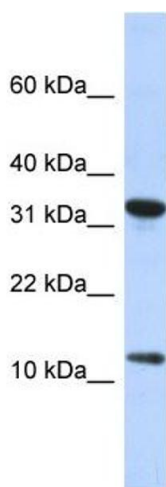
Buffer: Antibody is lyophilized in PBS buffer with 2 % sucrose.

Handling Advice: As with any antibody avoid repeat freeze-thaw cycles.

Storage: 4 °C/-20 °C

Storage Comment: For short periods of storage (days) store at 4 °C. For longer periods of storage, store BTF3L1 antibody at -20 °C.

Images



Western Blotting

Image 1.