

Datasheet for ABIN2458227
anti-ZNF660 antibody



[Go to Product page](#)

1 Image

Overview

Quantity:	100 µL
Target:	ZNF660
Reactivity:	Human
Host:	Rabbit
Clonality:	Polyclonal
Conjugate:	This ZNF660 antibody is un-conjugated
Application:	Western Blotting (WB), ELISA

Product Details

Immunogen:	Antibody produced in rabbits immunized with a synthetic peptide corresponding a region of human ZNF660.
Purification:	Antibody is purified by peptide affinity chromatography method.

Target Details

Target:	ZNF660
Alternative Name:	ZNF660 (ZNF660 Products)
Background:	Located on chromosome 3, the ZNF660 gene encodes for zinc finger protein 660.
Molecular Weight:	38 kDa
Gene ID:	285349
NCBI Accession:	NP_775929

Target Details

UniProt: Q6AZW8

Application Details

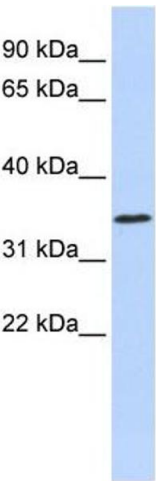
Application Notes: ZNF660 antibody can be used for detection of ZNF660 by ELISA at 1:62500. ZNF660 antibody can be used for detection of ZNF660 by western blot at 1 µg/mL, and HRP conjugated secondary antibody should be diluted 1:50,000 - 100,000.

Restrictions: For Research Use only

Handling

Format:	Lyophilized
Reconstitution:	Add 50 µL of distilled water. Final antibody concentration is 1 mg/mL.
Concentration:	1 mg/mL
Buffer:	Antibody is lyophilized in PBS buffer with 2 % sucrose.
Handling Advice:	As with any antibody avoid repeat freeze-thaw cycles.
Storage:	4 °C/-20 °C
Storage Comment:	For short periods of storage (days) store at 4 °C. For longer periods of storage, store ZNF660 antibody at -20 °C.

Images



Western Blotting

Image 1.