

Datasheet for ABIN2458253
anti-ANXA8L2 antibody



[Go to Product page](#)

1 Image

Overview

Quantity:	100 µL
Target:	ANXA8L2
Reactivity:	Human, Rat
Host:	Rabbit
Clonality:	Polyclonal
Conjugate:	This ANXA8L2 antibody is un-conjugated
Application:	Western Blotting (WB), ELISA

Product Details

Immunogen:	Antibody produced in rabbits immunized with a synthetic peptide corresponding a region of human ANXA8L2.
Purification:	Antibody is purified by peptide affinity chromatography method.

Target Details

Target:	ANXA8L2
Alternative Name:	ANXA8L2 (ANXA8L2 Products)
Background:	ANXA8L2 is a member of the annexin family of evolutionarily conserved Ca ²⁺ and phospholipid binding proteins. The protein may function as an anticoagulant that indirectly inhibits the thromboplastin-specific complex. Overexpression of this gene has been associated with acute myelocytic leukemia. A highly similar duplicated copy of this gene is found in close proximity on the long arm of chromosome 10. This gene encodes a member of the annexin family of

Target Details

evolutionarily conserved Ca²⁺ and phospholipid binding proteins. The encoded protein may function as an anticoagulant that indirectly inhibits the thromboplastin-specific complex. Overexpression of this gene has been associated with acute myelocytic leukemia. A highly similar duplicated copy of this gene is found in close proximity on the long arm of chromosome 10.

Molecular Weight: 37 kDa

Gene ID: 244

NCBI Accession: [NP_001621](#)

UniProt: [P13928](#)

Application Details

Application Notes: ANXA8L2 antibody can be used for detection of ANXA8L2 by ELISA at 1:1562500. ANXA8L2 antibody can be used for detection of ANXA8L2 by western blot at 1 µg/mL, and HRP conjugated secondary antibody should be diluted 1:50,000 - 100,000.

Restrictions: For Research Use only

Handling

Format: Lyophilized

Reconstitution: Add 50 µL of distilled water. Final antibody concentration is 1 mg/mL.

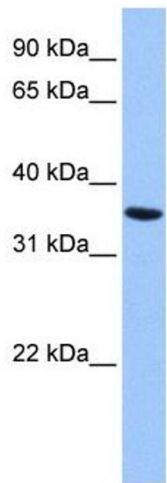
Concentration: 1 mg/mL

Buffer: Antibody is lyophilized in PBS buffer with 2 % sucrose.

Handling Advice: As with any antibody avoid repeat freeze-thaw cycles.

Storage: 4 °C/-20 °C

Storage Comment: For short periods of storage (days) store at 4 °C. For longer periods of storage, store ANXA8L2 antibody at -20 °C.



Western Blotting

Image 1.