

Datasheet for ABIN2458302

anti-RFX1 antibody[Go to Product page](#)**1** Image

Overview

| | |
|--------------|-------------------------------------|
| Quantity: | 100 µL |
| Target: | RFX1 |
| Reactivity: | Human, Mouse, Rat |
| Host: | Rabbit |
| Clonality: | Polyclonal |
| Conjugate: | This RFX1 antibody is un-conjugated |
| Application: | Western Blotting (WB), ELISA |

Product Details

| | |
|---------------|---|
| Immunogen: | Antibody produced in rabbits immunized with a synthetic peptide corresponding a region of human RFX1. |
| Purification: | Antibody is purified by peptide affinity chromatography method. |

Target Details

| | |
|-------------------|---|
| Target: | RFX1 |
| Alternative Name: | RFX1 (RFX1 Products) |
| Background: | RFX1 is a member of the regulatory factor X protein family, which are transcription factors that contain a highly-conserved winged helix DNA binding domain. RFX1 is structurally related to regulatory factors X2, X3, X4, and X5. It is a transcriptional activator that can bind DNA as a monomer or as a heterodimer with RFX family members X2, X3, and X5, but not with X4. This protein binds to the X-boxes of MHC class II genes and is essential for their expression. Also, it |

Target Details

can bind to an inverted repeat that is required for expression of hepatitis B virus genes. This gene is a member of the regulatory factor X gene family, which encodes transcription factors that contain a highly-conserved winged helix DNA binding domain. The protein encoded by this gene is structurally related to regulatory factors X2, X3, X4, and X5. It is a transcriptional activator that can bind DNA as a monomer or as a heterodimer with RFX family members X2, X3, and X5, but not with X4. This protein binds to the X-boxes of MHC class II genes and is essential for their expression. Also, it can bind to an inverted repeat that is required for expression of hepatitis B virus genes. Publication Note: This RefSeq record includes a subset of the publications that are available for this gene. Please see the Entrez Gene record to access additional publications.

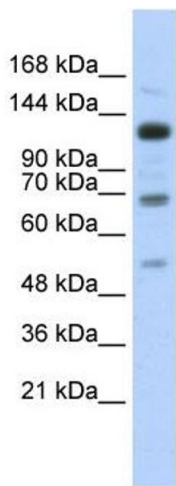
| | |
|-------------------|---|
| Molecular Weight: | 105 kDa |
| Gene ID: | 5989 |
| NCBI Accession: | NP_002909 |
| UniProt: | P22670 |
| Pathways: | Human Leukocyte Antigen (HLA) in Adaptive Immune Response |

Application Details

| | |
|--------------------|--|
| Application Notes: | RFX1 antibody can be used for detection of RFX1 by ELISA at 1:62500. RFX1 antibody can be used for detection of RFX1 by western blot at 1 µg/mL, and HRP conjugated secondary antibody should be diluted 1:50,000 - 100,000. |
| Restrictions: | For Research Use only |

Handling

| | |
|------------------|--|
| Format: | Lyophilized |
| Reconstitution: | Add 50 µL of distilled water. Final antibody concentration is 1 mg/mL. |
| Concentration: | 1 mg/mL |
| Buffer: | Antibody is lyophilized in PBS buffer with 2 % sucrose. |
| Handling Advice: | As with any antibody avoid repeat freeze-thaw cycles. |
| Storage: | 4 °C/-20 °C |
| Storage Comment: | For short periods of storage (days) store at 4 °C. For longer periods of storage, store RFX1 antibody at -20 °C. |



Western Blotting

Image 1.