

Datasheet for ABIN2458311

anti-ZFY antibody[Go to Product page](#)**1** Image

Overview

Quantity:	100 µL
Target:	ZFY
Reactivity:	Human
Host:	Rabbit
Clonality:	Polyclonal
Conjugate:	This ZFY antibody is un-conjugated
Application:	Western Blotting (WB), ELISA

Product Details

Immunogen:	Antibody produced in rabbits immunized with a synthetic peptide corresponding a region of human ZFY.
Purification:	Antibody is purified by peptide affinity chromatography method.

Target Details

Target:	ZFY
Alternative Name:	ZFY (ZFY Products)
Background:	ZFY is a zinc finger-containing protein that may function as a transcription factor. ZFY was once a candidate gene for the testis-determining factor (TDF) and was erroneously referred to as TDF. This gene encodes a zinc finger-containing protein that may function as a transcription factor. This gene was once a candidate gene for the testis-determining factor (TDF) and was erroneously referred to as TDF. Publication Note: This RefSeq record includes a subset of the

Target Details

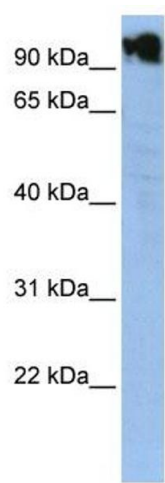
	publications that are available for this gene. Please see the Entrez Gene record to access additional publications.
Molecular Weight:	90 kDa
Gene ID:	7544
NCBI Accession:	NP_003402
UniProt:	P08048

Application Details

Application Notes:	ZFY antibody can be used for detection of ZFY by ELISA at 1:1562500. ZFY antibody can be used for detection of ZFY by western blot at 1 µg/mL, and HRP conjugated secondary antibody should be diluted 1:50,000 - 100,000.
Restrictions:	For Research Use only

Handling

Format:	Lyophilized
Reconstitution:	Add 50 µL of distilled water. Final antibody concentration is 1 mg/mL.
Concentration:	1 mg/mL
Buffer:	Antibody is lyophilized in PBS buffer with 2 % sucrose.
Handling Advice:	As with any antibody avoid repeat freeze-thaw cycles.
Storage:	4 °C/-20 °C
Storage Comment:	For short periods of storage (days) store at 4 °C. For longer periods of storage, store ZFY antibody at -20 °C.



Western Blotting

Image 1.