

Datasheet for ABIN2458434

anti-SSBP4 antibody



[Go to Product page](#)

1 Image

Overview

| | |
|--------------|--------------------------------------|
| Quantity: | 100 µL |
| Target: | SSBP4 |
| Reactivity: | Human, Mouse |
| Host: | Rabbit |
| Clonality: | Polyclonal |
| Conjugate: | This SSBP4 antibody is un-conjugated |
| Application: | Western Blotting (WB), ELISA |

Product Details

| | |
|---------------|--|
| Immunogen: | Antibody produced in rabbits immunized with a synthetic peptide corresponding a region of human SSBP4. |
| Purification: | Antibody is purified by peptide affinity chromatography method. |

Target Details

| | |
|-------------------|--|
| Target: | SSBP4 |
| Alternative Name: | SSBP4 (SSBP4 Products) |
| Background: | SSBP4 contains 1 LisH domain. The exact function of SSBP4 remains unknown. |
| Molecular Weight: | 37 kDa |
| Gene ID: | 170463 |
| NCBI Accession: | NP_001009998 |

Target Details

UniProt: [Q9BWW5](#)

Application Details

Application Notes: SSBP4 antibody can be used for detection of SSBP4 by ELISA at 1:1562500. SSBP4 antibody can be used for detection of SSBP4 by western blot at 1 µg/mL, and HRP conjugated secondary antibody should be diluted 1:50,000 - 100,000.

Restrictions: For Research Use only

Handling

Format: Lyophilized

Reconstitution: Add 50 µL of distilled water. Final antibody concentration is 1 mg/mL.

Concentration: 1 mg/mL

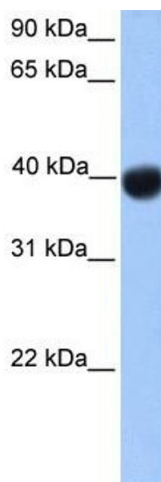
Buffer: Antibody is lyophilized in PBS buffer with 2 % sucrose.

Handling Advice: As with any antibody avoid repeat freeze-thaw cycles.

Storage: 4 °C/-20 °C

Storage Comment: For short periods of storage (days) store at 4 °C. For longer periods of storage, store SSBP4 antibody at -20 °C.

Images



Western Blotting

Image 1.