

Datasheet for ABIN2458442
anti-SLC26A10 antibody[Go to Product page](#)

1 Image

Overview

Quantity:	100 µL
Target:	SLC26A10
Reactivity:	Human
Host:	Rabbit
Clonality:	Polyclonal
Conjugate:	This SLC26A10 antibody is un-conjugated
Application:	Western Blotting (WB), ELISA

Product Details

Immunogen:	Antibody produced in rabbits immunized with a synthetic peptide corresponding a region of SLC26A10.
Purification:	Antibody is purified by peptide affinity chromatography method.

Target Details

Target:	SLC26A10
Alternative Name:	SLC26A10 (SLC26A10 Products)
Background:	SLC26A10 is a chloride/bicarbonate exchanger.
Molecular Weight:	60 kDa
Gene ID:	65012
NCBI Accession:	NP_597996

Target Details

UniProt: [Q8NG04](#)

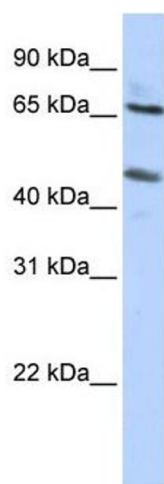
Application Details

Application Notes:	SLC26A10 antibody can be used for detection of SLC26A10 by ELISA at 1:62500. SLC26A10 antibody can be used for detection of SLC26A10 by western blot at 1 µg/mL, and HRP conjugated secondary antibody should be diluted 1:50,000 - 100,000.
Restrictions:	For Research Use only

Handling

Format:	Lyophilized
Reconstitution:	Add 50 µL of distilled water. Final antibody concentration is 1 mg/mL.
Concentration:	1 mg/mL
Buffer:	Antibody is lyophilized in PBS buffer with 2 % sucrose.
Handling Advice:	As with any antibody avoid repeat freeze-thaw cycles.
Storage:	4 °C/-20 °C
Storage Comment:	For short periods of storage (days) store at 4 °C. For longer periods of storage, store SLC26A10 antibody at -20 °C.

Images



Western Blotting

Image 1.