

Datasheet for ABIN2458449

**anti-ZNF641 antibody****1** Image[Go to Product page](#)

## Overview

Quantity:	100 µL
Target:	ZNF641
Reactivity:	Human
Host:	Rabbit
Clonality:	Polyclonal
Conjugate:	This ZNF641 antibody is un-conjugated
Application:	Western Blotting (WB), ELISA

## Product Details

Immunogen:	Antibody produced in rabbits immunized with a synthetic peptide corresponding a region of human ZNF641.
Purification:	Antibody is purified by peptide affinity chromatography method.

## Target Details

Target:	ZNF641
Alternative Name:	ZNF641 ( <a href="#">ZNF641 Products</a> )
Background:	ZNF641 belongs to the krueppel C2H2-type zinc-finger protein family. It contains 5 C2H2-type zinc fingers and 1 KRAB domain. ZNF641 activates transcriptional activities of SRE and AP-1.
Molecular Weight:	49 kDa
Gene ID:	121274

### Target Details

NCBI Accession:	<a href="#">NP_689533</a>
UniProt:	<a href="#">Q96N77</a>

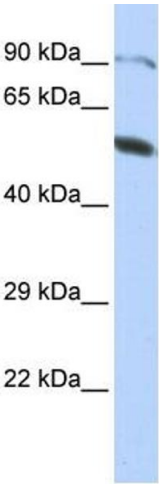
### Application Details

Application Notes:	ZNF641 antibody can be used for detection of ZNF641 by ELISA at 1:62500. ZNF641 antibody can be used for detection of ZNF641 by western blot at 1 µg/mL, and HRP conjugated secondary antibody should be diluted 1:50,000 - 100,000.
Restrictions:	For Research Use only

### Handling

Format:	Lyophilized
Reconstitution:	Add 50 µL of distilled water. Final antibody concentration is 1 mg/mL.
Concentration:	1 mg/mL
Buffer:	Antibody is lyophilized in PBS buffer with 2 % sucrose.
Handling Advice:	As with any antibody avoid repeat freeze-thaw cycles.
Storage:	4 °C/-20 °C
Storage Comment:	For short periods of storage (days) store at 4 °C. For longer periods of storage, store ZNF641 antibody at -20 °C.

### Images



**Western Blotting**

**Image 1.**