

Datasheet for ABIN2458475

anti-INSIG1 antibody[Go to Product page](#)**1** Image

Overview

Quantity:	100 µL
Target:	INSIG1
Reactivity:	Human, Mouse, Rat
Host:	Rabbit
Clonality:	Polyclonal
Conjugate:	This INSIG1 antibody is un-conjugated
Application:	Western Blotting (WB), ELISA

Product Details

Immunogen:	Antibody produced in rabbits immunized with a synthetic peptide corresponding a region of human INSIG1.
Purification:	Antibody is purified by peptide affinity chromatography method.

Target Details

Target:	INSIG1
Alternative Name:	INSIG1 (INSIG1 Products)
Background:	Oxysterols regulate cholesterol homeostasis through the liver X receptor (LXR)- and sterol regulatory element-binding protein (SREBP)-mediated signaling pathways. This gene is an insulin-induced gene. INSIG1 is an endoplasmic reticulum (ER) membrane protein that plays a critical role in regulating cholesterol concentrations in cells. INSIG1 binds to the sterol-sensing domains of SREBP cleavage-activating protein (SCAP) and HMG CoA reductase, and is

Target Details

essential for the sterol-mediated trafficking of the two proteins. The protein encoded by this gene is highly similar to the protein product encoded by gene INSIG1. Both INSIG1 protein and this protein are endoplasmic reticulum proteins that block the processing of sterol regulatory element binding proteins (SREBPs) by binding to SREBP cleavage-activating protein (SCAP), and thus prevent SCAP from escorting SREBPs to the Golgi. Publication Note: This RefSeq record includes a subset of the publications that are available for this gene. Please see the Entrez Gene record to access additional publications.

Molecular Weight: 25 kDa

Gene ID: 51141

NCBI Accession: [NP_057217](#)

UniProt: [Q9Y5U4](#)

Pathways: [ER-Nucleus Signaling](#)

Application Details

Application Notes: INSIG1 antibody can be used for detection of INSIG1 by ELISA at 1:1562500. INSIG1 antibody can be used for detection of INSIG1 by western blot at 1 µg/mL, and HRP conjugated secondary antibody should be diluted 1:50,000 - 100,000.

Restrictions: For Research Use only

Handling

Format: Lyophilized

Reconstitution: Add 50 µL of distilled water. Final antibody concentration is 1 mg/mL.

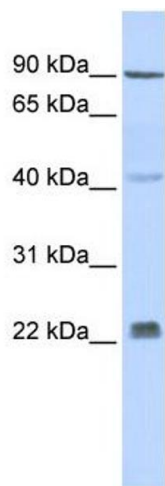
Concentration: 1 mg/mL

Buffer: Antibody is lyophilized in PBS buffer with 2 % sucrose.

Handling Advice: As with any antibody avoid repeat freeze-thaw cycles.

Storage: 4 °C/-20 °C

Storage Comment: For short periods of storage (days) store at 4 °C. For longer periods of storage, store INSIG1 antibody at -20 °C.



Western Blotting

Image 1.