

Datasheet for ABIN2458595

**anti-C1orf116 antibody**[Go to Product page](#)**1** Image

## Overview

Quantity:	100 µL
Target:	C1orf116 (c1orf116)
Reactivity:	Human, Mouse, Rat
Host:	Rabbit
Clonality:	Polyclonal
Conjugate:	This C1orf116 antibody is un-conjugated
Application:	Western Blotting (WB), ELISA

## Product Details

Immunogen:	Antibody produced in rabbits immunized with a synthetic peptide corresponding a region of human C1orf116.
Purification:	Antibody is purified by peptide affinity chromatography method.

## Target Details

Target:	C1orf116 (c1orf116)
Alternative Name:	C1orf116 ( <a href="#">c1orf116 Products</a> )
Background:	C1orf116 belongs to the SARG family. It is a putative androgen-specific receptor. It is highly expressed in prostate.
Molecular Weight:	37 kDa
Gene ID:	79098

## Target Details

NCBI Accession: [NP\\_001077393](#)

UniProt: [Q9BW04](#)

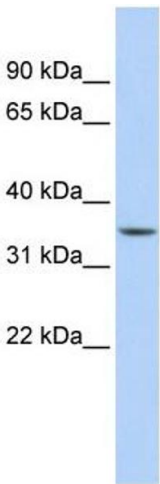
## Application Details

Application Notes:	C1orf116 antibody can be used for detection of C1orf116 by ELISA at 1:312500. C1orf116 antibody can be used for detection of C1orf116 by western blot at 1 µg/mL, and HRP conjugated secondary antibody should be diluted 1:50,000 - 100,000.
Restrictions:	For Research Use only

## Handling

Format:	Lyophilized
Reconstitution:	Add 50 µL of distilled water. Final antibody concentration is 1 mg/mL.
Concentration:	1 mg/mL
Buffer:	Antibody is lyophilized in PBS buffer with 2 % sucrose.
Handling Advice:	As with any antibody avoid repeat freeze-thaw cycles.
Storage:	4 °C/-20 °C
Storage Comment:	For short periods of storage (days) store at 4 °C. For longer periods of storage, store C1orf116 antibody at -20 °C.

## Images



**Western Blotting**

**Image 1.**