



[Go to Product page](#)

Datasheet for ABIN2458627

anti-RDH16 antibody

1 Image

Overview

Quantity:	100 µL
Target:	RDH16
Reactivity:	Human
Host:	Rabbit
Clonality:	Polyclonal
Conjugate:	This RDH16 antibody is un-conjugated
Application:	Western Blotting (WB), ELISA

Product Details

Immunogen:	Antibody produced in rabbits immunized with a synthetic peptide corresponding a region of human RDH16.
Purification:	Antibody is purified by peptide affinity chromatography method.

Target Details

Target:	RDH16
Alternative Name:	RDH16 (RDH16 Products)
Background:	RDH16 is an oxidoreductase with a preference for NAD. It oxidizes all-trans-retinol and 13-cis-retinol to the corresponding aldehydes. RDH16 has higher activity towards CRBP-bound retinol than with free retinol. It also oxidizes androstanediol and androsterone to dihydrotestosterone and androstenedione. RDH16 can also catalyze the reverse reaction.
Molecular Weight:	36 kDa

Target Details

Gene ID: 8608

NCBI Accession: [NP_003699](#)

UniProt: [O75452](#)

Pathways: [Steroid Hormone Biosynthesis](#)

Application Details

Application Notes: RDH16 antibody can be used for detection of RDH16 by ELISA at 1:312500. RDH16 antibody can be used for detection of RDH16 by western blot at 1 µg/mL, and HRP conjugated secondary antibody should be diluted 1:50,000 - 100,000.

Restrictions: For Research Use only

Handling

Format: Lyophilized

Reconstitution: Add 50 µL of distilled water. Final antibody concentration is 1 mg/mL.

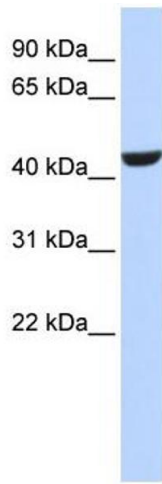
Concentration: 1 mg/mL

Buffer: Antibody is lyophilized in PBS buffer with 2 % sucrose.

Handling Advice: As with any antibody avoid repeat freeze-thaw cycles.

Storage: 4 °C/-20 °C

Storage Comment: For short periods of storage (days) store at 4 °C. For longer periods of storage, store RDH16 antibody at -20 °C.



Western Blotting

Image 1.