

Datasheet for ABIN2458664
anti-TBC1D16 antibody[Go to Product page](#)

1 Image

Overview

Quantity:	100 µL
Target:	TBC1D16
Reactivity:	Human, Mouse, Rat
Host:	Rabbit
Clonality:	Polyclonal
Conjugate:	This TBC1D16 antibody is un-conjugated
Application:	Western Blotting (WB), ELISA

Product Details

Immunogen:	Antibody produced in rabbits immunized with a synthetic peptide corresponding a region of human TBC1D16.
Purification:	Antibody is purified by peptide affinity chromatography method.

Target Details

Target:	TBC1D16
Alternative Name:	TBC1D16 (TBC1D16 Products)
Background:	TBC1D16 may act as a GTPase-activating protein for Rab family protein (s).
Molecular Weight:	86 kDa
Gene ID:	125058
NCBI Accession:	NP_061893

Target Details

UniProt: [Q8TBP0](#)

Application Details

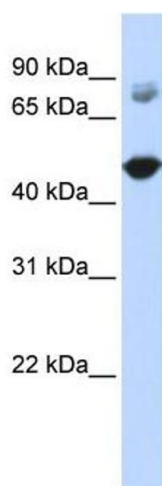
Application Notes: TBC1D16 antibody can be used for detection of TBC1D16 by ELISA at 1:312500. TBC1D16 antibody can be used for detection of TBC1D16 by western blot at 1 µg/mL, and HRP conjugated secondary antibody should be diluted 1:50,000 - 100,000.

Restrictions: For Research Use only

Handling

Format:	Lyophilized
Reconstitution:	Add 50 µL of distilled water. Final antibody concentration is 1 mg/mL.
Concentration:	1 mg/mL
Buffer:	Antibody is lyophilized in PBS buffer with 2 % sucrose.
Handling Advice:	As with any antibody avoid repeat freeze-thaw cycles.
Storage:	4 °C/-20 °C
Storage Comment:	For short periods of storage (days) store at 4 °C. For longer periods of storage, store TBC1D16 antibody at -20 °C.

Images



Western Blotting

Image 1.