

Datasheet for ABIN2458735  
**anti-LONRF3 antibody**



[Go to Product page](#)

1 Image

## Overview

Quantity:	100 µL
Target:	LONRF3
Reactivity:	Human
Host:	Rabbit
Clonality:	Polyclonal
Conjugate:	This LONRF3 antibody is un-conjugated
Application:	Western Blotting (WB), ELISA

## Product Details

Immunogen:	Antibody produced in rabbits immunized with a synthetic peptide corresponding a region of human LONRF3.
Purification:	Antibody is purified by peptide affinity chromatography method.

## Target Details

Target:	LONRF3
Alternative Name:	LONRF3 ( <a href="#">LONRF3 Products</a> )
Background:	LONRF3 contains a RING finger domain, a motif present in a variety of functionally distinct proteins and known to be involved in protein-protein and protein-DNA interactions. Multiple alternatively spliced transcript variants have been suggested, but their full length natures are not clear. The protein encoded by this gene contains a RING finger domain, a motif present in a variety of functionally distinct proteins and known to be involved in protein-protein and protein-

## Target Details

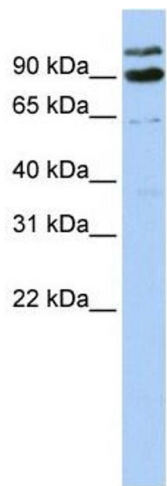
	DNA interactions. Multiple alternatively spliced transcript variants have been suggested, but their full length natures are not clear.
Molecular Weight:	84 kDa
Gene ID:	79836
NCBI Accession:	<a href="#">NP_001027026</a>
UniProt:	<a href="#">Q496Y0</a>

## Application Details

Application Notes:	LONRF3 antibody can be used for detection of LONRF3 by ELISA at 1:312500. LONRF3 antibody can be used for detection of LONRF3 by western blot at 1 µg/mL, and HRP conjugated secondary antibody should be diluted 1:50,000 - 100,000.
Restrictions:	For Research Use only

## Handling

Format:	Lyophilized
Reconstitution:	Add 50 µL of distilled water. Final antibody concentration is 1 mg/mL.
Concentration:	1 mg/mL
Buffer:	Antibody is lyophilized in PBS buffer with 2 % sucrose.
Handling Advice:	As with any antibody avoid repeat freeze-thaw cycles.
Storage:	4 °C/-20 °C
Storage Comment:	For short periods of storage (days) store at 4 °C. For longer periods of storage, store LONRF3 antibody at -20 °C.



**Western Blotting**

**Image 1.**