

Datasheet for ABIN2458742

**anti-UBE3B antibody**[Go to Product page](#)**1** Image

## Overview

Quantity:	100 µL
Target:	UBE3B
Reactivity:	Human, Mouse, Rat
Host:	Rabbit
Clonality:	Polyclonal
Conjugate:	This UBE3B antibody is un-conjugated
Application:	Western Blotting (WB), ELISA

## Product Details

Immunogen:	Antibody produced in rabbits immunized with a synthetic peptide corresponding a region of human UBE3B.
Purification:	Antibody is purified by peptide affinity chromatography method.

## Target Details

Target:	UBE3B
Alternative Name:	UBE3B ( <a href="#">UBE3B Products</a> )
Background:	The modification of proteins with ubiquitin is an important cellular mechanism for targeting abnormal or short-lived proteins for degradation. Ubiquitination involves at least three classes of enzymes: ubiquitin-activating enzymes, or E1s, ubiquitin-conjugating enzymes, or E2s, and ubiquitin-protein ligases, or E3s. UBE3B is a member of the E3 ubiquitin-conjugating enzyme family. UBE3B may interact with other proteins and play a role in stress response. The

## Target Details

modification of proteins with ubiquitin is an important cellular mechanism for targeting abnormal or short-lived proteins for degradation. Ubiquitination involves at least three classes of enzymes: ubiquitin-activating enzymes, or E1s, ubiquitin-conjugating enzymes, or E2s, and ubiquitin-protein ligases, or E3s. This gene encodes a member of the E3 ubiquitin-conjugating enzyme family. The encoded protein may interact with other proteins and play a role in stress response. Alternatively spliced transcript variants encoding the same protein isoform have been identified for this gene.

Molecular Weight: 123 kDa

Gene ID: 89910

NCBI Accession: [NP\\_569733](#)

UniProt: [Q7Z3V4](#)

## Application Details

Application Notes: UBE3B antibody can be used for detection of UBE3B by ELISA at 1:312500. UBE3B antibody can be used for detection of UBE3B by western blot at 1 µg/mL, and HRP conjugated secondary antibody should be diluted 1:50,000 - 100,000.

Restrictions: For Research Use only

## Handling

Format: Lyophilized

Reconstitution: Add 50 µL of distilled water. Final antibody concentration is 1 mg/mL.

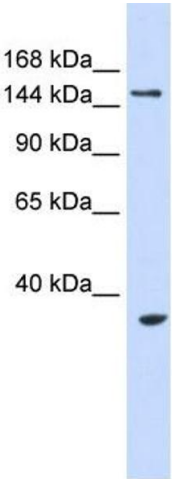
Concentration: 1 mg/mL

Buffer: Antibody is lyophilized in PBS buffer with 2 % sucrose.

Handling Advice: As with any antibody avoid repeat freeze-thaw cycles.

Storage: 4 °C/-20 °C

Storage Comment: For short periods of storage (days) store at 4 °C. For longer periods of storage, store UBE3B antibody at -20 °C.



**Western Blotting**

**Image 1.**