

Datasheet for ABIN2458791  
**anti-SLC23A2 antibody**



[Go to Product page](#)

1 Image

## Overview

Quantity:	100 µL
Target:	SLC23A2
Reactivity:	Human, Rat, Mouse
Host:	Rabbit
Clonality:	Polyclonal
Conjugate:	This SLC23A2 antibody is un-conjugated
Application:	Western Blotting (WB), ELISA

## Product Details

Immunogen:	Antibody produced in rabbits immunized with a synthetic peptide corresponding a region of human SLC23A2.
Purification:	Antibody is purified by peptide affinity chromatography method.

## Target Details

Target:	SLC23A2
Alternative Name:	SLC23A2 ( <a href="#">SLC23A2 Products</a> )
Background:	The absorption of vitamin C into the body and its distribution to organs requires two sodium-dependent vitamin C transporters. This gene encodes one of the two required transporters and the encoded protein accounts for tissue-specific uptake of vitamin C. Previously, this gene had an official symbol of SLC23A1. The absorption of vitamin C into the body and its distribution to organs requires two sodium-dependent vitamin C transporters. This gene encodes one of the

## Target Details

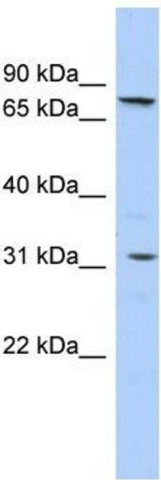
	two required transporters and the encoded protein accounts for tissue-specific uptake of vitamin C. Previously, this gene had an official symbol of SLC23A1.
Molecular Weight:	70 kDa
Gene ID:	9962
NCBI Accession:	<a href="#">NP_005107</a>
UniProt:	<a href="#">Q9UGH3</a>
Pathways:	<a href="#">Skeletal Muscle Fiber Development</a>

## Application Details

Application Notes:	SLC23A2 antibody can be used for detection of SLC23A2 by ELISA at 1:312500. SLC23A2 antibody can be used for detection of SLC23A2 by western blot at 1 µg/mL, and HRP conjugated secondary antibody should be diluted 1:50,000 - 100,000.
Restrictions:	For Research Use only

## Handling

Format:	Lyophilized
Reconstitution:	Add 50 µL of distilled water. Final antibody concentration is 1 mg/mL.
Concentration:	1 mg/mL
Buffer:	Antibody is lyophilized in PBS buffer with 2 % sucrose.
Handling Advice:	As with any antibody avoid repeat freeze-thaw cycles.
Storage:	4 °C/-20 °C
Storage Comment:	For short periods of storage (days) store at 4 °C. For longer periods of storage, store SLC23A2 antibody at -20 °C.



**Western Blotting**

**Image 1.**