



[Go to Product page](#)

Datasheet for ABIN2458797  
**anti-SLC35A5 antibody**

1 Image

### Overview

Quantity:	100 µL
Target:	SLC35A5
Reactivity:	Human, Mouse, Rat
Host:	Rabbit
Clonality:	Polyclonal
Conjugate:	This SLC35A5 antibody is un-conjugated
Application:	Western Blotting (WB), ELISA

### Product Details

Immunogen:	Antibody produced in rabbits immunized with a synthetic peptide corresponding a region of human SLC35A5.
Purification:	Antibody is purified by peptide affinity chromatography method.

### Target Details

Target:	SLC35A5
Alternative Name:	SLC35A5 ( <a href="#">SLC35A5 Products</a> )
Background:	SLC35A5 belongs to the nucleotide-sugar transporter family, SLC35A subfamily. It is a multi-pass membrane protein. The function of the SLC35A5 protein remains unknown.
Molecular Weight:	48 kDa
Gene ID:	55032

## Target Details

NCBI Accession: [NP\\_060415](#)

UniProt: [Q9BS91](#)

## Application Details

Application Notes: SLC35A5 antibody can be used for detection of SLC35A5 by ELISA at 1:62500. SLC35A5 antibody can be used for detection of SLC35A5 by western blot at 1 µg/mL, and HRP conjugated secondary antibody should be diluted 1:50,000 - 100,000.

Restrictions: For Research Use only

## Handling

Format: Lyophilized

Reconstitution: Add 50 µL of distilled water. Final antibody concentration is 1 mg/mL.

Concentration: 1 mg/mL

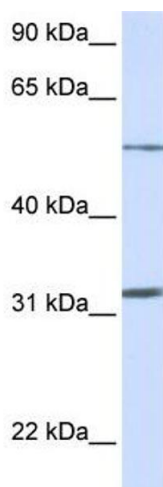
Buffer: Antibody is lyophilized in PBS buffer with 2 % sucrose.

Handling Advice: As with any antibody avoid repeat freeze-thaw cycles.

Storage: 4 °C/-20 °C

Storage Comment: For short periods of storage (days) store at 4 °C. For longer periods of storage, store SLC35A5 antibody at -20 °C.

## Images



### Western Blotting

Image 1.