

Datasheet for ABIN2458801

anti-SLC37A1 antibody[Go to Product page](#)**1** Image

Overview

Quantity:	100 µL
Target:	SLC37A1
Reactivity:	Human, Rat
Host:	Rabbit
Clonality:	Polyclonal
Conjugate:	This SLC37A1 antibody is un-conjugated
Application:	ELISA, Western Blotting (WB)

Product Details

Immunogen:	Antibody produced in rabbits immunized with a synthetic peptide corresponding a region of human SLC37A1.
Purification:	Antibody is purified by peptide affinity chromatography method.

Target Details

Target:	SLC37A1
Alternative Name:	SLC37A1 (SLC37A1 Products)
Background:	SLC37A1, a member of the sugar-phosphate transport family, transports glycerol-3-phosphate (G3P) between cellular compartments for its utilization in several compartment-specific biochemical pathways.SLC37A1, a member of the sugar-phosphate transport family, transports glycerol-3-phosphate (G3P) between cellular compartments for its utilization in several compartment-specific biochemical pathways.

Target Details

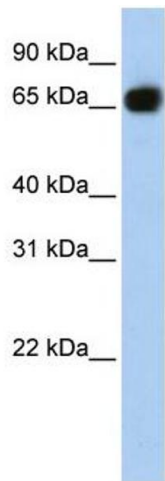
Molecular Weight:	58 kDa
Gene ID:	54020
NCBI Accession:	NP_061837
UniProt:	P57057

Application Details

Application Notes:	SLC37A1 antibody can be used for detection of SLC37A1 by ELISA at 1:1562500. SLC37A1 antibody can be used for detection of SLC37A1 by western blot at 1 µg/mL, and HRP conjugated secondary antibody should be diluted 1:50,000 - 100,000.
Restrictions:	For Research Use only

Handling

Format:	Lyophilized
Reconstitution:	Add 50 µL of distilled water. Final antibody concentration is 1 mg/mL.
Concentration:	1 mg/mL
Buffer:	Antibody is lyophilized in PBS buffer with 2 % sucrose.
Handling Advice:	As with any antibody avoid repeat freeze-thaw cycles.
Storage:	4 °C/-20 °C
Storage Comment:	For short periods of storage (days) store at 4 °C. For longer periods of storage, store SLC37A1 antibody at -20 °C.



Western Blotting

Image 1.