

Datasheet for ABIN2458803

anti-SLC24A6 antibody[Go to Product page](#)**1** Image

Overview

Quantity:	100 µL
Target:	SLC24A6
Reactivity:	Human, Mouse, Rat
Host:	Rabbit
Clonality:	Polyclonal
Conjugate:	This SLC24A6 antibody is un-conjugated
Application:	Western Blotting (WB), ELISA

Product Details

Immunogen:	Antibody produced in rabbits immunized with a synthetic peptide corresponding a region of human SLC24A6.
Purification:	Antibody is purified by peptide affinity chromatography method.

Target Details

Target:	SLC24A6
Alternative Name:	SLC24A6 (SLC24A6 Products)
Background:	SLC24A6 belongs to a family of potassium-dependent sodium/calcium exchangers that maintain cellular calcium homeostasis through the electrogenic countertransport of 4 sodium ions for 1 calcium ion and 1 potassium ion. SLC24A6 belongs to a family of potassium-dependent sodium/calcium exchangers that maintain cellular calcium homeostasis through the electrogenic countertransport of 4 sodium ions for 1 calcium ion and 1 potassium ion (Cai and

Target Details

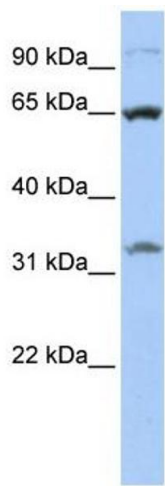
	Lytton, 2004 [PubMed 14625281]).
Molecular Weight:	64 kDa
Gene ID:	80024
NCBI Accession:	NP_079235
UniProt:	Q6J4K2
Pathways:	Carbohydrate Homeostasis

Application Details

Application Notes:	SLC24A6 antibody can be used for detection of SLC24A6 by ELISA at 1:62500. SLC24A6 antibody can be used for detection of SLC24A6 by western blot at 1 µg/mL, and HRP conjugated secondary antibody should be diluted 1:50,000 - 100,000.
Restrictions:	For Research Use only

Handling

Format:	Lyophilized
Reconstitution:	Add 50 µL of distilled water. Final antibody concentration is 1 mg/mL.
Concentration:	1 mg/mL
Buffer:	Antibody is lyophilized in PBS buffer with 2 % sucrose.
Handling Advice:	As with any antibody avoid repeat freeze-thaw cycles.
Storage:	4 °C/-20 °C
Storage Comment:	For short periods of storage (days) store at 4 °C. For longer periods of storage, store SLC24A6 antibody at -20 °C.



Western Blotting

Image 1.