

Datasheet for ABIN2458807
anti-SLC8A3 antibody



[Go to Product page](#)

1 Image

Overview

Quantity:	100 µL
Target:	SLC8A3
Reactivity:	Human, Rat, Mouse
Host:	Rabbit
Clonality:	Polyclonal
Conjugate:	This SLC8A3 antibody is un-conjugated
Application:	ELISA, Western Blotting (WB)

Product Details

Immunogen:	Antibody produced in rabbits immunized with a synthetic peptide corresponding a region of human SLC8A3.
Purification:	Antibody is purified by peptide affinity chromatography method.

Target Details

Target:	SLC8A3
Alternative Name:	SLC8A3 (SLC8A3 Products)
Background:	SLC8A3 is a member of the sodium/calcium exchanger integral membrane protein family. Three mammalian isoforms in family 8 have been identified. Na ⁺ /Ca ²⁺ exchange proteins are involved in maintaining Ca ²⁺ homeostasis in a wide variety of cell types. The protein is regulated by intracellular calcium ions and is found in both the plasma membrane and intracellular organellar membranes, where exchange of Na ⁺ for Ca ²⁺ occurs in an electrogenic

Target Details

manner. This gene encodes a member of the sodium/calcium exchanger integral membrane protein family. Three mammalian isoforms in family 8 have been identified. Na⁺/Ca²⁺ exchange proteins are involved in maintaining Ca²⁺ homeostasis in a wide variety of cell types. The protein is regulated by intracellular calcium ions and is found in both the plasma membrane and intracellular organellar membranes, where exchange of Na⁺ for Ca²⁺ occurs in an electrogenic manner. Alternative splicing has been observed for this gene and multiple variants have been described.

Molecular Weight: 103 kDa

Gene ID: 6547

NCBI Accession: [NP_150287](#)

UniProt: [Q96QG2](#)

Application Details

Application Notes: SLC8A3 antibody can be used for detection of SLC8A3 by ELISA at 1:1562500. SLC8A3 antibody can be used for detection of SLC8A3 by western blot at 1 µg/mL, and HRP conjugated secondary antibody should be diluted 1:50,000 - 100,000.

Restrictions: For Research Use only

Handling

Format: Lyophilized

Reconstitution: Add 50 µL of distilled water. Final antibody concentration is 1 mg/mL.

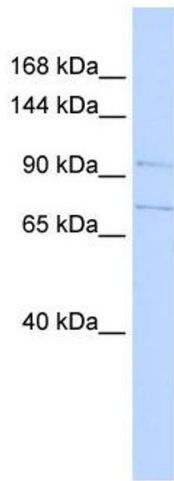
Concentration: 1 mg/mL

Buffer: Antibody is lyophilized in PBS buffer with 2 % sucrose.

Handling Advice: As with any antibody avoid repeat freeze-thaw cycles.

Storage: 4 °C/-20 °C

Storage Comment: For short periods of storage (days) store at 4 °C. For longer periods of storage, store SLC8A3 antibody at -20 °C.



Western Blotting

Image 1.