

Datasheet for ABIN2458815
anti-SLC25A16 antibody[Go to Product page](#)

1 Image

Overview

Quantity:	100 µL
Target:	SLC25A16
Reactivity:	Human, Mouse, Rat
Host:	Rabbit
Clonality:	Polyclonal
Conjugate:	This SLC25A16 antibody is un-conjugated
Application:	Western Blotting (WB), ELISA

Product Details

Immunogen:	Antibody produced in rabbits immunized with a synthetic peptide corresponding a region of human SLC25A16.
Purification:	Antibody is purified by peptide affinity chromatography method.

Target Details

Target:	SLC25A16
Alternative Name:	SLC25A16 (SLC25A16 Products)
Background:	SLC25A16 is a protein that contains three tandemly repeated mitochondrial carrier protein domains. The protein is localized in the inner membrane and facilitates the rapid transport and exchange of molecules between the cytosol and the mitochondrial matrix space. SLC25A16 gene has a possible role in Graves' disease. This gene encodes a protein that contains three tandemly repeated mitochondrial carrier protein domains. The encoded protein is localized in

Target Details

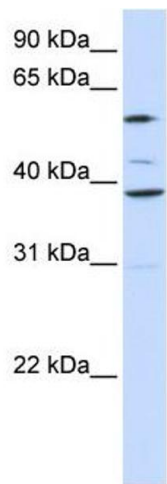
	the inner membrane and facilitates the rapid transport and exchange of molecules between the cytosol and the mitochondrial matrix space. This gene has a possible role in Graves' disease.
Molecular Weight:	36 kDa
Gene ID:	8034
NCBI Accession:	NP_689920
UniProt:	P16260

Application Details

Application Notes:	SLC25A16 antibody can be used for detection of SLC25A16 by ELISA at 1:62500. SLC25A16 antibody can be used for detection of SLC25A16 by western blot at 1 µg/mL, and HRP conjugated secondary antibody should be diluted 1:50,000 - 100,000.
Restrictions:	For Research Use only

Handling

Format:	Lyophilized
Reconstitution:	Add 50 µL of distilled water. Final antibody concentration is 1 mg/mL.
Concentration:	1 mg/mL
Buffer:	Antibody is lyophilized in PBS buffer with 2 % sucrose.
Handling Advice:	As with any antibody avoid repeat freeze-thaw cycles.
Storage:	4 °C/-20 °C
Storage Comment:	For short periods of storage (days) store at 4 °C. For longer periods of storage, store SLC25A16 antibody at -20 °C.



Western Blotting

Image 1.