

Datasheet for ABIN2458816

**anti-SLC35F3 antibody**[Go to Product page](#)**1** Image

## Overview

Quantity:	100 µL
Target:	SLC35F3
Reactivity:	Human, Mouse, Rat
Host:	Rabbit
Clonality:	Polyclonal
Conjugate:	This SLC35F3 antibody is un-conjugated
Application:	Western Blotting (WB), ELISA

## Product Details

Immunogen:	Antibody produced in rabbits immunized with a synthetic peptide corresponding a region of human SLC35F3.
Purification:	Antibody is purified by peptide affinity chromatography method.

## Target Details

Target:	SLC35F3
Alternative Name:	SLC35F3 ( <a href="#">SLC35F3 Products</a> )
Background:	SLC35F3 is a multi-pass membrane proteinPotential. It belongs to the SLC35F solute transporter family. SLC35F3 is a putative solute transporter.
Molecular Weight:	55 kDa
Gene ID:	148641

## Target Details

NCBI Accession: [NP\\_775779](#)

## Application Details

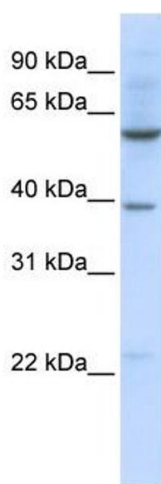
Application Notes: SLC35F3 antibody can be used for detection of SLC35F3 by ELISA at 1:62500. SLC35F3 antibody can be used for detection of SLC35F3 by western blot at 1 µg/mL, and HRP conjugated secondary antibody should be diluted 1:50,000 - 100,000.

Restrictions: For Research Use only

## Handling

Format:	Lyophilized
Reconstitution:	Add 50 µL of distilled water. Final antibody concentration is 1 mg/mL.
Concentration:	1 mg/mL
Buffer:	Antibody is lyophilized in PBS buffer with 2 % sucrose.
Handling Advice:	As with any antibody avoid repeat freeze-thaw cycles.
Storage:	4 °C/-20 °C
Storage Comment:	For short periods of storage (days) store at 4 °C. For longer periods of storage, store SLC35F3 antibody at -20 °C.

## Images



### Western Blotting

Image 1.