

Datasheet for ABIN2458817

anti-SLC39A5 antibody[Go to Product page](#)**1** Image

Overview

Quantity:	100 µL
Target:	SLC39A5
Reactivity:	Human, Mouse, Rat
Host:	Rabbit
Clonality:	Polyclonal
Conjugate:	This SLC39A5 antibody is un-conjugated
Application:	Western Blotting (WB), ELISA

Product Details

Immunogen:	Antibody produced in rabbits immunized with a synthetic peptide corresponding a region of human SLC39A5.
Purification:	Antibody is purified by peptide affinity chromatography method.

Target Details

Target:	SLC39A5
Alternative Name:	SLC39A5 (SLC39A5 Products)
Background:	Zinc is an essential cofactor for hundreds of enzymes. It is involved in protein, nucleic acid, carbohydrate, and lipid metabolism, as well as in the control of gene transcription, growth, development, and differentiation. SLC39A5 belongs to a subfamily of proteins that show structural characteristics of zinc transporters. Zinc is an essential cofactor for hundreds of enzymes. It is involved in protein, nucleic acid, carbohydrate, and lipid metabolism, as well as in

Target Details

the control of gene transcription, growth, development, and differentiation. SLC39A5 belongs to a subfamily of proteins that show structural characteristics of zinc transporters (Taylor and Nicholson, 2003 [PubMed 12659941]).

Molecular Weight: 56 kDa

Gene ID: 283375

NCBI Accession: [NP_775867](#)

UniProt: [Q6ZMH5](#)

Pathways: [Transition Metal Ion Homeostasis](#)

Application Details

Application Notes: SLC39A5 antibody can be used for detection of SLC39A5 by ELISA at 1:312500. SLC39A5 antibody can be used for detection of SLC39A5 by western blot at 1 µg/mL, and HRP conjugated secondary antibody should be diluted 1:50,000 - 100,000.

Restrictions: For Research Use only

Handling

Format: Lyophilized

Reconstitution: Add 50 µL of distilled water. Final antibody concentration is 1 mg/mL.

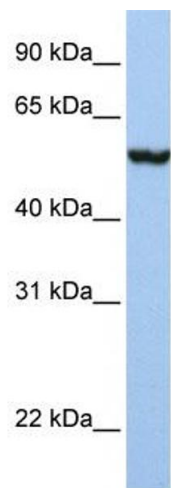
Concentration: 1 mg/mL

Buffer: Antibody is lyophilized in PBS buffer with 2 % sucrose.

Handling Advice: As with any antibody avoid repeat freeze-thaw cycles.

Storage: 4 °C/-20 °C

Storage Comment: For short periods of storage (days) store at 4 °C. For longer periods of storage, store SLC39A5 antibody at -20 °C.



Western Blotting

Image 1.