



## Datasheet for ABIN2458821 anti-SLC25A35 antibody



[Go to Product page](#)

### 1 Image

#### Overview

Quantity:	100 µL
Target:	SLC25A35
Reactivity:	Human, Mouse, Rat
Host:	Rabbit
Clonality:	Polyclonal
Conjugate:	This SLC25A35 antibody is un-conjugated
Application:	ELISA, Western Blotting (WB)

#### Product Details

Immunogen:	Antibody produced in rabbits immunized with a synthetic peptide corresponding a region of human SLC25A35.
Purification:	Antibody is purified by peptide affinity chromatography method.

#### Target Details

Target:	SLC25A35
Alternative Name:	SLC25A35 ( <a href="#">SLC25A35 Products</a> )
Background:	SLC25A35 belongs to the mitochondrial carrier family. It contains 3 Solcar repeats. It is a multi-pass membrane protein. The functions of SLC25A35 remain unknown. SLC25A35 belongs to the SLC25 family of mitochondrial carrier proteins (Haitina et al., 2006 [PubMed 16949250]).
Molecular Weight:	31 kDa
Gene ID:	399512

## Target Details

NCBI Accession: [NP\\_958928](#)

## Application Details

Application Notes: SLC25A35 antibody can be used for detection of SLC25A35 by ELISA at 1:312500. SLC25A35 antibody can be used for detection of SLC25A35 by western blot at 1 µg/mL, and HRP conjugated secondary antibody should be diluted 1:50,000 - 100,000.

Restrictions: For Research Use only

## Handling

Format: Lyophilized

Reconstitution: Add 50 µL of distilled water. Final antibody concentration is 1 mg/mL.

Concentration: 1 mg/mL

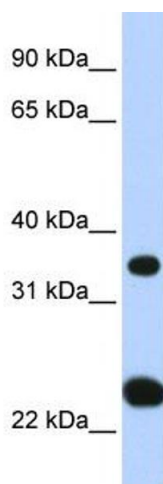
Buffer: Antibody is lyophilized in PBS buffer with 2 % sucrose.

Handling Advice: As with any antibody avoid repeat freeze-thaw cycles.

Storage: 4 °C/-20 °C

Storage Comment: For short periods of storage (days) store at 4 °C. For longer periods of storage, store SLC25A35 antibody at -20 °C.

## Images



### Western Blotting

Image 1.