

Datasheet for ABIN2458867

**anti-LPPR5 antibody**[Go to Product page](#)**1** Image

## Overview

Quantity:	100 µL
Target:	LPPR5
Reactivity:	Human, Mouse, Rat
Host:	Rabbit
Clonality:	Polyclonal
Conjugate:	This LPPR5 antibody is un-conjugated
Application:	Western Blotting (WB), ELISA

## Product Details

Immunogen:	Antibody produced in rabbits immunized with a synthetic peptide corresponding a region of human PAP2D.
Purification:	Antibody is purified by peptide affinity chromatography method.

## Target Details

Target:	LPPR5
Alternative Name:	PAP2D ( <a href="#">LPPR5 Products</a> )
Background:	PAP2D is a type 2 member of the phosphatidic acid phosphatase (PAP) family. All type 2 members of this protein family contain 6 transmembrane regions, and a consensus N-glycosylation site. PAPs convert phosphatidic acid to diacylglycerol, and function in de novo synthesis of glycerolipids as well as in receptor-activated signal transduction mediated by phospholipase D. Alternate transcriptional splice variants, encoding different isoforms, have

## Target Details

been characterized. The protein encoded by this gene is a type 2 member of the phosphatidic acid phosphatase (PAP) family. All type 2 members of this protein family contain 6 transmembrane regions, and a consensus N-glycosylation site. PAPs convert phosphatidic acid to diacylglycerol, and function in de novo synthesis of glycerolipids as well as in receptor-activated signal transduction mediated by phospholipase D. Alternate transcriptional splice variants, encoding different isoforms, have been characterized.

Molecular Weight:	35 kDa
Gene ID:	163404
NCBI Accession:	<a href="#">NP_001010861</a>
UniProt:	<a href="#">Q32ZD0</a>

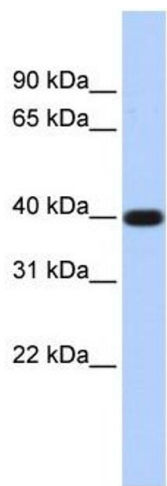
## Application Details

**Application Notes:** PAP2D antibody can be used for detection of PAP2D by ELISA at 1:312500. PAP2D antibody can be used for detection of PAP2D by western blot at 1 µg/mL, and HRP conjugated secondary antibody should be diluted 1:50,000 - 100,000.

**Restrictions:** For Research Use only

## Handling

Format:	Lyophilized
Reconstitution:	Add 50 µL of distilled water. Final antibody concentration is 1 mg/mL.
Concentration:	1 mg/mL
Buffer:	Antibody is lyophilized in PBS buffer with 2 % sucrose.
Handling Advice:	As with any antibody avoid repeat freeze-thaw cycles.
Storage:	4 °C/-20 °C
Storage Comment:	For short periods of storage (days) store at 4 °C. For longer periods of storage, store PAP2D antibody at -20 °C.



**Western Blotting**

**Image 1.**