

Datasheet for ABIN2458901  
**anti-CEACAM16 antibody**



[Go to Product page](#)

1 Image

## Overview

Quantity:	100 µL
Target:	CEACAM16
Reactivity:	Human, Mouse, Rat
Host:	Rabbit
Clonality:	Polyclonal
Conjugate:	This CEACAM16 antibody is un-conjugated
Application:	Western Blotting (WB), ELISA

## Product Details

Immunogen:	Antibody produced in rabbits immunized with a synthetic peptide corresponding a region of human CEACAM16.
Purification:	Antibody is purified by peptide affinity chromatography method.

## Target Details

Target:	CEACAM16
Alternative Name:	CEACAM16 ( <a href="#">CEACAM16 Products</a> )
Background:	CEACAM16 is a single-pass type I membrane protein. It belongs to the immunoglobulin superfamily, CEA family. It contains 2 Ig-like C2-type (immunoglobulin-like) domains. The exact function of CEACAM16 remains unknown.
Molecular Weight:	53 kDa
Gene ID:	388551

Target Details

NCBI Accession:	NP_001034302
UniProt:	Q2WEN9
Pathways:	Sensory Perception of Sound

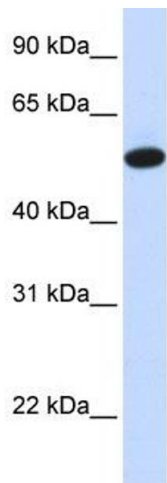
Application Details

Application Notes:	CEACAM16 antibody can be used for detection of CEACAM16 by ELISA at 1:312500. CEACAM16 antibody can be used for detection of CEACAM16 by western blot at 1 µg/mL, and HRP conjugated secondary antibody should be diluted 1:50,000 - 100,000.
Restrictions:	For Research Use only

Handling

Format:	Lyophilized
Reconstitution:	Add 50 µL of distilled water. Final antibody concentration is 1 mg/mL.
Concentration:	1 mg/mL
Buffer:	Antibody is lyophilized in PBS buffer with 2 % sucrose.
Handling Advice:	As with any antibody avoid repeat freeze-thaw cycles.
Storage:	4 °C/-20 °C
Storage Comment:	For short periods of storage (days) store at 4 °C. For longer periods of storage, store CEACAM16 antibody at -20 °C.

Images



Western Blotting

Image 1.