

Datasheet for ABIN2458925

anti-LRCH4 antibody**1** Image[Go to Product page](#)

Overview

Quantity:	100 µL
Target:	LRCH4
Reactivity:	Human, Mouse, Rat
Host:	Rabbit
Clonality:	Polyclonal
Conjugate:	This LRCH4 antibody is un-conjugated
Application:	Western Blotting (WB), ELISA

Product Details

Immunogen:	Antibody produced in rabbits immunized with a synthetic peptide corresponding a region of human LRCH4.
Purification:	Antibody is purified by peptide affinity chromatography method.

Target Details

Target:	LRCH4
Alternative Name:	LRCH4 (LRCH4 Products)
Background:	LRCH4 is a protein that contains leucine-rich repeats (LRR) at its amino terminus and that is known to be involved in ligand binding. The carboxyl terminus may act as a membrane anchor. Identified structural elements suggest that this protein resembles a receptor. This gene encodes a protein that contains leucine-rich repeats (LRR) at its amino terminus and that is known to be involved in ligand binding. The carboxyl terminus may act as a membrane anchor. Identified

Target Details

structural elements suggest that the encoded protein resembles a receptor.

Molecular Weight: 73 kDa

Gene ID: 4034

NCBI Accession: [NP_002310](#)

UniProt: [O75427](#)

Application Details

Application Notes: LRCH4 antibody can be used for detection of LRCH4 by ELISA at 1:312500. LRCH4 antibody can be used for detection of LRCH4 by western blot at 1 µg/mL, and HRP conjugated secondary antibody should be diluted 1:50,000 - 100,000.

Restrictions: For Research Use only

Handling

Format: Lyophilized

Reconstitution: Add 50 µL of distilled water. Final antibody concentration is 1 mg/mL.

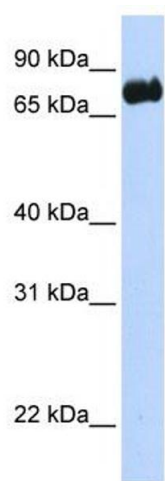
Concentration: 1 mg/mL

Buffer: Antibody is lyophilized in PBS buffer with 2 % sucrose.

Handling Advice: As with any antibody avoid repeat freeze-thaw cycles.

Storage: 4 °C/-20 °C

Storage Comment: For short periods of storage (days) store at 4 °C. For longer periods of storage, store LRCH4 antibody at -20 °C.



Western Blotting

Image 1.