



[Go to Product page](#)

Datasheet for ABIN2458975  
**anti-KRTAP24-1 antibody**

1 Image

### Overview

Quantity:	100 µL
Target:	KRTAP24-1
Reactivity:	Human
Host:	Rabbit
Clonality:	Polyclonal
Conjugate:	This KRTAP24-1 antibody is un-conjugated
Application:	Western Blotting (WB), ELISA

### Product Details

Immunogen:	Antibody produced in rabbits immunized with a synthetic peptide corresponding a region of human KRTAP24-1.
Purification:	Antibody is purified by peptide affinity chromatography method.

### Target Details

Target:	KRTAP24-1
Alternative Name:	KRTAP24-1 ( <a href="#">KRTAP24-1 Products</a> )
Background:	In the hair cortex, hair keratin intermediate filaments are embedded in an interfilamentous matrix, consisting of hair keratin-associated proteins (KRTAP), which are essential for the formation of a rigid and resistant hair shaft through their extensive disulfide bond cross-linking with abundant cysteine residues of hair keratins. The matrix proteins include the high-sulfur and high-glycine-tyrosine keratins.

## Target Details

---

Molecular Weight:	28 kDa
Gene ID:	643803
NCBI Accession:	<a href="#">NP_001078924</a>
UniProt:	<a href="#">Q3LI83</a>

## Application Details

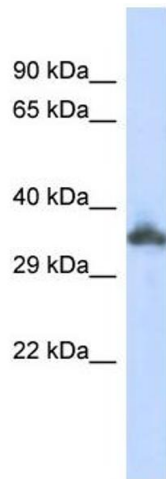
---

Application Notes:	KRTAP24-1 antibody can be used for detection of KRTAP24-1 by ELISA at 1:62500. KRTAP24-1 antibody can be used for detection of KRTAP24-1 by western blot at 1 µg/mL, and HRP conjugated secondary antibody should be diluted 1:50,000 - 100,000.
Restrictions:	For Research Use only

## Handling

---

Format:	Lyophilized
Reconstitution:	Add 50 µL of distilled water. Final antibody concentration is 1 mg/mL.
Concentration:	1 mg/mL
Buffer:	Antibody is lyophilized in PBS buffer with 2 % sucrose.
Handling Advice:	As with any antibody avoid repeat freeze-thaw cycles.
Storage:	4 °C/-20 °C
Storage Comment:	For short periods of storage (days) store at 4 °C. For longer periods of storage, store KRTAP24-1 antibody at -20 °C.



### Western Blotting

Image 1.