



[Go to Product page](#)

Datasheet for ABIN2459046
anti-MAN1A2 antibody

1 Image

Overview

Quantity:	100 µL
Target:	MAN1A2
Reactivity:	Human, Mouse, Rat
Host:	Rabbit
Clonality:	Polyclonal
Conjugate:	This MAN1A2 antibody is un-conjugated
Application:	Western Blotting (WB), ELISA

Product Details

Immunogen:	Antibody produced in rabbits immunized with a synthetic peptide corresponding a region of human MAN1A2.
Purification:	Antibody is purified by peptide affinity chromatography method.

Target Details

Target:	MAN1A2
Alternative Name:	MAN1A2 (MAN1A2 Products)
Background:	Alpha-mannosidases function at different stages of N-glycan maturation in mammalian cells. See MAN2A1 (MIM 154582) for general information. Alpha-mannosidases function at different stages of N-glycan maturation in mammalian cells. See MAN2A1 (MIM 154582) for general information.
Molecular Weight:	73 kDa

Target Details

Gene ID: 10905

NCBI Accession: [NP_006690](#)

UniProt: [O60476](#)

Application Details

Application Notes: MAN1A2 antibody can be used for detection of MAN1A2 by ELISA at 1:62500. MAN1A2 antibody can be used for detection of MAN1A2 by western blot at 1 µg/mL, and HRP conjugated secondary antibody should be diluted 1:50,000 - 100,000.

Restrictions: For Research Use only

Handling

Format: Lyophilized

Reconstitution: Add 50 µL of distilled water. Final antibody concentration is 1 mg/mL.

Concentration: 1 mg/mL

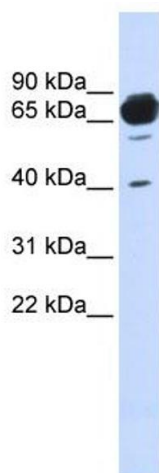
Buffer: Antibody is lyophilized in PBS buffer with 2 % sucrose.

Handling Advice: As with any antibody avoid repeat freeze-thaw cycles.

Storage: 4 °C/-20 °C

Storage Comment: For short periods of storage (days) store at 4 °C. For longer periods of storage, store MAN1A2 antibody at -20 °C.

Images



Western Blotting

Image 1.