



[Go to Product page](#)

Datasheet for ABIN2459070  
**anti-KIAA1024 antibody**

1 Image

### Overview

Quantity:	100 µL
Target:	KIAA1024
Reactivity:	Human, Mouse, Rat
Host:	Rabbit
Clonality:	Polyclonal
Conjugate:	This KIAA1024 antibody is un-conjugated
Application:	Western Blotting (WB), ELISA

### Product Details

Immunogen:	Antibody produced in rabbits immunized with a synthetic peptide corresponding a region of human KIAA1024.
Purification:	Antibody is purified by peptide affinity chromatography method.

### Target Details

Target:	KIAA1024
Alternative Name:	KIAA1024 ( <a href="#">KIAA1024 Products</a> )
Background:	KIAA1024 is a single-pass membrane proteinPotential. It belongs to the UPF0258 family. The function of the KIAA1024 protein remains unknown.
Molecular Weight:	103 kDa
Gene ID:	23251

## Target Details

NCBI Accession: [NP\\_056021](#)

UniProt: [Q9UPX6](#)

## Application Details

Application Notes: KIAA1024 antibody can be used for detection of KIAA1024 by ELISA at 1:312500. KIAA1024 antibody can be used for detection of KIAA1024 by western blot at 1 µg/mL, and HRP conjugated secondary antibody should be diluted 1:50,000 - 100,000.

Restrictions: For Research Use only

## Handling

Format: Lyophilized

Reconstitution: Add 50 µL of distilled water. Final antibody concentration is 1 mg/mL.

Concentration: 1 mg/mL

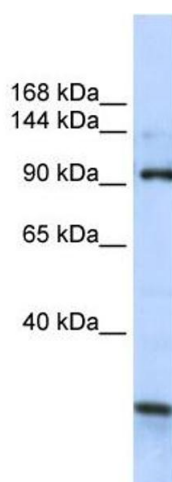
Buffer: Antibody is lyophilized in PBS buffer with 2 % sucrose.

Handling Advice: As with any antibody avoid repeat freeze-thaw cycles.

Storage: 4 °C/-20 °C

Storage Comment: For short periods of storage (days) store at 4 °C. For longer periods of storage, store KIAA1024 antibody at -20 °C.

## Images



### Western Blotting

Image 1.