

Datasheet for ABIN2459072
anti-CTDNEP1A antibody[Go to Product page](#)

1 Image

Overview

Quantity:	100 µL
Target:	CTDNEP1A
Reactivity:	Human, Mouse, Rat
Host:	Rabbit
Clonality:	Polyclonal
Conjugate:	This CTDNEP1A antibody is un-conjugated
Application:	ELISA, Western Blotting (WB)

Product Details

Immunogen:	Antibody produced in rabbits immunized with a synthetic peptide corresponding a region of human DULLARD.
Purification:	Antibody is purified by peptide affinity chromatography method.

Target Details

Target:	CTDNEP1A
Alternative Name:	DULLARD (CTDNEP1A Products)
Background:	DULLARD is a serine/threonine phosphatase which may be required for proper nuclear membrane morphology. DULLARD was involved in LPIN1 dephosphorylation. It may antagonize BMP signaling.
Molecular Weight:	28 kDa
Gene ID:	23399

Target Details

NCBI Accession: [NP_056158](#)

UniProt: [O95476](#)

Application Details

Application Notes: DULLARD antibody can be used for detection of DULLARD by ELISA at 1:62500. DULLARD antibody can be used for detection of DULLARD by western blot at 1 µg/mL, and HRP conjugated secondary antibody should be diluted 1:50,000 - 100,000.

Restrictions: For Research Use only

Handling

Format: Lyophilized

Reconstitution: Add 50 µL of distilled water. Final antibody concentration is 1 mg/mL.

Concentration: 1 mg/mL

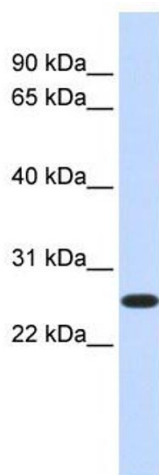
Buffer: Antibody is lyophilized in PBS buffer with 2 % sucrose.

Handling Advice: As with any antibody avoid repeat freeze-thaw cycles.

Storage: 4 °C/-20 °C

Storage Comment: For short periods of storage (days) store at 4 °C. For longer periods of storage, store DULLARD antibody at -20 °C.

Images



Western Blotting

Image 1.