

Datasheet for ABIN2459122

**anti-ARGFX antibody**[Go to Product page](#)**1** Image

## Overview

Quantity:	100 µL
Target:	ARGFX
Reactivity:	Human
Host:	Rabbit
Clonality:	Polyclonal
Conjugate:	This ARGFX antibody is un-conjugated
Application:	Western Blotting (WB), ELISA

## Product Details

Immunogen:	Antibody produced in rabbits immunized with a synthetic peptide corresponding a region of human ARGFX.
Purification:	Antibody is purified by peptide affinity chromatography method.

## Target Details

Target:	ARGFX
Alternative Name:	ARGFX ( <a href="#">ARGFX Products</a> )
Background:	ARGFX belongs to the paired homeobox family. Homeobox genes encode DNA-binding proteins, many of which are thought to be involved in early embryonic development. Homeobox genes encode a DNA-binding domain of 60 to 63 amino acids referred to as the homeodomain. Homeobox genes encode DNA-binding proteins, many of which are thought to be involved in early embryonic development. Homeobox genes encode a DNA-binding domain

## Target Details

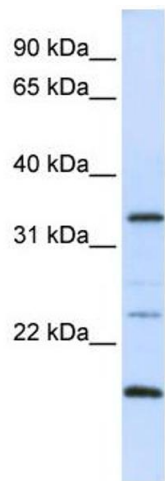
	of 60 to 63 amino acids referred to as the homeodomain. This gene is a member of the ARGFX homeobox gene family.
Molecular Weight:	35 kDa
Gene ID:	503582
NCBI Accession:	<a href="#">NP_001012677</a>
UniProt:	<a href="#">A6NJG6</a>

## Application Details

Application Notes:	ARGFX antibody can be used for detection of ARGFX by ELISA at 1:312500. ARGFX antibody can be used for detection of ARGFX by western blot at 1 µg/mL, and HRP conjugated secondary antibody should be diluted 1:50,000 - 100,000.
Restrictions:	For Research Use only

## Handling

Format:	Lyophilized
Reconstitution:	Add 50 µL of distilled water. Final antibody concentration is 1 mg/mL.
Concentration:	1 mg/mL
Buffer:	Antibody is lyophilized in PBS buffer with 2 % sucrose.
Handling Advice:	As with any antibody avoid repeat freeze-thaw cycles.
Storage:	4 °C/-20 °C
Storage Comment:	For short periods of storage (days) store at 4 °C. For longer periods of storage, store ARGFX antibody at -20 °C.



Western Blotting

Image 1.