

## Datasheet for ABIN2459151 **anti-PPP1R13B antibody**

[Go to Product page](#)

### 1 Image

#### Overview

Quantity:	100 µL
Target:	PPP1R13B
Reactivity:	Human, Mouse, Rat
Host:	Rabbit
Clonality:	Polyclonal
Conjugate:	This PPP1R13B antibody is un-conjugated
Application:	Western Blotting (WB), ELISA

#### Product Details

Immunogen:	Antibody produced in rabbits immunized with a synthetic peptide corresponding a region of human PPP1R13B.
Purification:	Antibody is purified by peptide affinity chromatography method.

#### Target Details

Target:	PPP1R13B
Alternative Name:	PPP1R13B ( <a href="#">PPP1R13B Products</a> )
Background:	PPP1R13B is a member of the ASPP (apoptosis-stimulating protein of p53) family of p53 interacting proteins. The protein contains four ankyrin repeats and an SH3 domain involved in protein-protein interactions. ASPP proteins are required for the induction of apoptosis by p53-family proteins. They promote DNA binding and transactivation of p53-family proteins on the promoters of proapoptotic genes. Expression of this gene is regulated by the E2F transcription

## Target Details

factor. This gene encodes a member of the ASPP (apoptosis-stimulating protein of p53) family of p53 interacting proteins. The protein contains four ankyrin repeats and an SH3 domain involved in protein-protein interactions. ASPP proteins are required for the induction of apoptosis by p53-family proteins. They promote DNA binding and transactivation of p53-family proteins on the promoters of proapoptotic genes. Expression of this gene is regulated by the E2F transcription factor.

Molecular Weight: 119 kDa

Gene ID: 23368

NCBI Accession: [NP\\_056131](#)

UniProt: [Q96KQ4](#)

Pathways: [p53 Signaling](#)

## Application Details

Application Notes: PPP1R13B antibody can be used for detection of PPP1R13B by ELISA at 1:312500. PPP1R13B antibody can be used for detection of PPP1R13B by western blot at 1 µg/mL, and HRP conjugated secondary antibody should be diluted 1:50,000 - 100,000.

Restrictions: For Research Use only

## Handling

Format: Lyophilized

Reconstitution: Add 50 µL of distilled water. Final antibody concentration is 1 mg/mL.

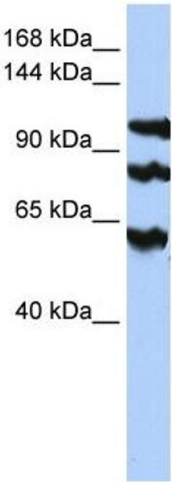
Concentration: 1 mg/mL

Buffer: Antibody is lyophilized in PBS buffer with 2 % sucrose.

Handling Advice: As with any antibody avoid repeat freeze-thaw cycles.

Storage: 4 °C/-20 °C

Storage Comment: For short periods of storage (days) store at 4 °C. For longer periods of storage, store PPP1R13B antibody at -20 °C.



**Western Blotting**

**Image 1.**