



Datasheet for ABIN2459196  
**anti-ADSSL1 antibody**



[Go to Product page](#)

1 Image

Overview

Quantity:	100 µL
Target:	ADSSL1
Reactivity:	Human, Mouse, Rat
Host:	Rabbit
Clonality:	Polyclonal
Conjugate:	This ADSSL1 antibody is un-conjugated
Application:	Western Blotting (WB), ELISA

Product Details

Immunogen:	Antibody produced in rabbits immunized with a synthetic peptide corresponding a region of human ADSSL1.
Purification:	Antibody is purified by peptide affinity chromatography method.

Target Details

Target:	ADSSL1
Alternative Name:	ADSSL1 ( <a href="#">ADSSL1 Products</a> )
Background:	ADSSL1 is a muscle isozyme of adenylosuccinate synthase (EC 6.3.4.4), which catalyzes the initial reaction in the conversion of inosine monophosphate (IMP) to adenosine monophosphate (AMP).
Molecular Weight:	50 kDa
Gene ID:	122622

## Target Details

NCBI Accession:	<a href="#">NP_689541</a>
UniProt:	<a href="#">Q8N142</a>
Pathways:	<a href="#">Ribonucleoside Biosynthetic Process</a>

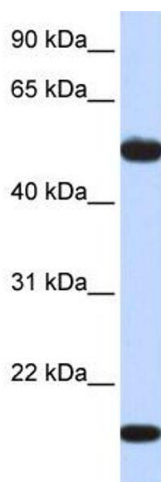
## Application Details

Application Notes:	ADSSL1 antibody can be used for detection of ADSSL1 by ELISA at 1:12500. ADSSL1 antibody can be used for detection of ADSSL1 by western blot at 1 µg/mL, and HRP conjugated secondary antibody should be diluted 1:50,000 - 100,000.
Restrictions:	For Research Use only

## Handling

Format:	Lyophilized
Reconstitution:	Add 50 µL of distilled water. Final antibody concentration is 1 mg/mL.
Concentration:	1 mg/mL
Buffer:	Antibody is lyophilized in PBS buffer with 2 % sucrose.
Handling Advice:	As with any antibody avoid repeat freeze-thaw cycles.
Storage:	4 °C/-20 °C
Storage Comment:	For short periods of storage (days) store at 4 °C. For longer periods of storage, store ADSSL1 antibody at -20 °C.

## Images



### Western Blotting

Image 1.