

Datasheet for ABIN2459206

**anti-SULT6B1 antibody**[Go to Product page](#)**1** Image

## Overview

|              |  |
|--------------|--|
| Quantity:    | 100 µL                                 |
| Target:      | SULT6B1                                |
| Reactivity:  | Human                                  |
| Host:        | Rabbit                                 |
| Clonality:   | Polyclonal                             |
| Conjugate:   | This SULT6B1 antibody is un-conjugated |
| Application: | Western Blotting (WB), ELISA           |

## Product Details

|               |  |
|---------------|--|
| Immunogen:    | Antibody produced in rabbits immunized with a synthetic peptide corresponding a region of human SULT6B1. |
| Purification: | Antibody is purified by peptide affinity chromatography method.  |

## Target Details

|                   |  |
|-------------------|--|
| Target:           | SULT6B1  |
| Alternative Name: | SULT6B1 ( <a href="#">SULT6B1 Products</a> )   |
| Background:       | SULT6B1 belongs to the sulfotransferase 1 family. SULT6B1 may catalyze the sulfate conjugation of many drugs, xenobiotic compounds, hormones, and neurotransmitters. |
| Molecular Weight: | 30 kDa   |
| Gene ID:          | 391365   |

## Target Details

NCBI Accession: [NP\\_001027549](#)

UniProt: [Q6IMI4](#)

## Application Details

Application Notes: SULT6B1 antibody can be used for detection of SULT6B1 by ELISA at 1:312500. SULT6B1 antibody can be used for detection of SULT6B1 by western blot at 1 µg/mL, and HRP conjugated secondary antibody should be diluted 1:50,000 - 100,000.

Restrictions: For Research Use only

## Handling

Format: Lyophilized

Reconstitution: Add 50 µL of distilled water. Final antibody concentration is 1 mg/mL.

Concentration: 1 mg/mL

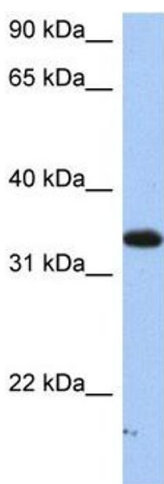
Buffer: Antibody is lyophilized in PBS buffer with 2 % sucrose.

Handling Advice: As with any antibody avoid repeat freeze-thaw cycles.

Storage: 4 °C/-20 °C

Storage Comment: For short periods of storage (days) store at 4 °C. For longer periods of storage, store SULT6B1 antibody at -20 °C.

## Images



### Western Blotting

Image 1.