

Datasheet for ABIN2459225
anti-SDF2 antibody



[Go to Product page](#)

1 Image

Overview

Quantity:	100 µL
Target:	SDF2
Reactivity:	Human, Mouse, Rat
Host:	Rabbit
Clonality:	Polyclonal
Conjugate:	This SDF2 antibody is un-conjugated
Application:	Western Blotting (WB), ELISA

Product Details

Immunogen:	Antibody produced in rabbits immunized with a synthetic peptide corresponding a region of human SDF2.
Purification:	Antibody is purified by peptide affinity chromatography method.

Target Details

Target:	SDF2
Alternative Name:	SDF2 (SDF2 Products)
Background:	SDF2 is believed to be a secretory protein. It has regions of similarity to hydrophilic segments of yeast mannosyltransferases. Its expression is ubiquitous and the gene appears to be relatively conserved among mammals. The protein encoded by this gene is believed to be a secretory protein. It has regions of similarity to hydrophilic segments of yeast mannosyltransferases. Its expression is ubiquitous and the gene appears to be relatively conserved among mammals.

Target Details

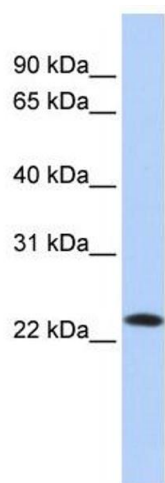
Molecular Weight:	21 kDa
Gene ID:	6388
NCBI Accession:	NP_008854
UniProt:	Q99470
Pathways:	SARS-CoV-2 Protein Interactome

Application Details

Application Notes:	SDF2 antibody can be used for detection of SDF2 by ELISA at 1:62500. SDF2 antibody can be used for detection of SDF2 by western blot at 1 µg/mL, and HRP conjugated secondary antibody should be diluted 1:50,000 - 100,000.
Restrictions:	For Research Use only

Handling

Format:	Lyophilized
Reconstitution:	Add 50 µL of distilled water. Final antibody concentration is 1 mg/mL.
Concentration:	1 mg/mL
Buffer:	Antibody is lyophilized in PBS buffer with 2 % sucrose.
Handling Advice:	As with any antibody avoid repeat freeze-thaw cycles.
Storage:	4 °C/-20 °C
Storage Comment:	For short periods of storage (days) store at 4 °C. For longer periods of storage, store SDF2 antibody at -20 °C.



Western Blotting

Image 1.