

Datasheet for ABIN2459243

anti-QTRTD1 antibody[Go to Product page](#)**1** Image

Overview

Quantity:	100 µL
Target:	QTRTD1
Reactivity:	Human, Mouse, Rat
Host:	Rabbit
Clonality:	Polyclonal
Conjugate:	This QTRTD1 antibody is un-conjugated
Application:	Western Blotting (WB), ELISA

Product Details

Immunogen:	Antibody produced in rabbits immunized with a synthetic peptide corresponding a region of human QTRTD1.
Purification:	Antibody is purified by peptide affinity chromatography method.

Target Details

Target:	QTRTD1
Alternative Name:	QTRTD1 (QTRTD1 Products)
Background:	QTRTD1 belongs to the queuine tRNA-ribosyltransferase family. The function of the QTRTD1 protein remains unknown.
Molecular Weight:	47 kDa
Gene ID:	79691

Target Details

NCBI Accession:	NP_078914
UniProt:	Q9H974
Pathways:	Ribonucleoside Biosynthetic Process

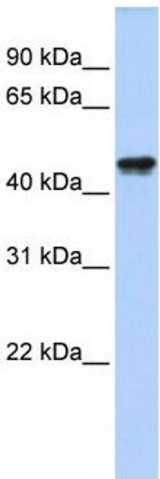
Application Details

Application Notes:	QTRTD1 antibody can be used for detection of QTRTD1 by ELISA at 1:312500. QTRTD1 antibody can be used for detection of QTRTD1 by western blot at 1 µg/mL, and HRP conjugated secondary antibody should be diluted 1:50,000 - 100,000.
Restrictions:	For Research Use only

Handling

Format:	Lyophilized
Reconstitution:	Add 50 µL of distilled water. Final antibody concentration is 1 mg/mL.
Concentration:	1 mg/mL
Buffer:	Antibody is lyophilized in PBS buffer with 2 % sucrose.
Handling Advice:	As with any antibody avoid repeat freeze-thaw cycles.
Storage:	4 °C/-20 °C
Storage Comment:	For short periods of storage (days) store at 4 °C. For longer periods of storage, store QTRTD1 antibody at -20 °C.

Images



Western Blotting

Image 1.