

Datasheet for ABIN2459266

**anti-GLT6D1 antibody**[Go to Product page](#)**1** Image

## Overview

Quantity:	100 µL
Target:	GLT6D1
Reactivity:	Human
Host:	Rabbit
Clonality:	Polyclonal
Conjugate:	This GLT6D1 antibody is un-conjugated
Application:	Western Blotting (WB), ELISA

## Product Details

Immunogen:	Antibody produced in rabbits immunized with a synthetic peptide corresponding a region of human GLT6D1.
Purification:	Antibody is purified by peptide affinity chromatography method.

## Target Details

Target:	GLT6D1
Alternative Name:	GLT6D1 ( <a href="#">GLT6D1 Products</a> )
Background:	GLT6D1 is a single-pass type II membrane protein. It belongs to the glycosyltransferase 6 family. The exact function of GLT6D1 remains unknown.
Molecular Weight:	32 kDa
Gene ID:	360203

## Target Details

NCBI Accession: [NP\\_892019](#)

UniProt: [Q7Z4J2](#)

## Application Details

Application Notes: GLT6D1 antibody can be used for detection of GLT6D1 by ELISA at 1:1562500. GLT6D1 antibody can be used for detection of GLT6D1 by western blot at 1 µg/mL, and HRP conjugated secondary antibody should be diluted 1:50,000 - 100,000.

Restrictions: For Research Use only

## Handling

Format: Lyophilized

Reconstitution: Add 50 µL of distilled water. Final antibody concentration is 1 mg/mL.

Concentration: 1 mg/mL

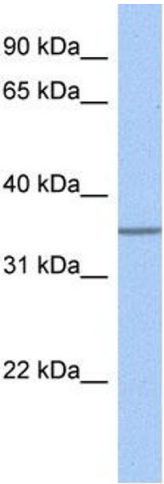
Buffer: Antibody is lyophilized in PBS buffer with 2 % sucrose.

Handling Advice: As with any antibody avoid repeat freeze-thaw cycles.

Storage: 4 °C/-20 °C

Storage Comment: For short periods of storage (days) store at 4 °C. For longer periods of storage, store GLT6D1 antibody at -20 °C.

## Images



### Western Blotting

Image 1.