



Datasheet for ABIN2459272  
**anti-LOC641515 antibody**



[Go to Product page](#)

1 Image

Overview

Quantity:	100 µL
Target:	LOC641515
Reactivity:	Human
Host:	Rabbit
Clonality:	Polyclonal
Conjugate:	This LOC641515 antibody is un-conjugated
Application:	ELISA, Western Blotting (WB)

Product Details

Immunogen:	Antibody produced in rabbits immunized with a synthetic peptide corresponding a region of human LOC641515.
Purification:	Antibody is purified by peptide affinity chromatography method.

Target Details

Target:	LOC641515
Alternative Name:	LOC641515
Background:	The exact function of LOC641515 remains unknown.
Molecular Weight:	40 kDa
Gene ID:	641515
NCBI Accession:	<a href="#">XP_001132106</a>

## Target Details

UniProt: [Q49AQ9](#)

## Application Details

Application Notes: LOC641515 antibody can be used for detection of LOC641515 by ELISA at 1:12500.  
LOC641515 antibody can be used for detection of LOC641515 by western blot at 1 µg/mL, and HRP conjugated secondary antibody should be diluted 1:50,000 - 100,000.

Restrictions: For Research Use only

## Handling

Format: Lyophilized

Reconstitution: Add 50 µL of distilled water. Final antibody concentration is 1 mg/mL.

Concentration: 1 mg/mL

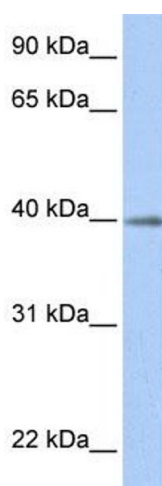
Buffer: Antibody is lyophilized in PBS buffer with 2 % sucrose.

Handling Advice: As with any antibody avoid repeat freeze-thaw cycles.

Storage: 4 °C/-20 °C

Storage Comment: For short periods of storage (days) store at 4 °C. For longer periods of storage, store LOC641515 antibody at -20 °C.

## Images



### Western Blotting

Image 1.