

Datasheet for ABIN2459277  
**anti-PCDHAC2 antibody**



[Go to Product page](#)

1 Image

## Overview

Quantity:	100 µL
Target:	PCDHAC2
Reactivity:	Human, Mouse, Rat
Host:	Rabbit
Clonality:	Polyclonal
Conjugate:	This PCDHAC2 antibody is un-conjugated
Application:	Western Blotting (WB), ELISA

## Product Details

Immunogen:	Antibody produced in rabbits immunized with a synthetic peptide corresponding a region of human PCDHAC2.
Purification:	Antibody is purified by peptide affinity chromatography method.

## Target Details

Target:	PCDHAC2
Alternative Name:	PCDHAC2 ( <a href="#">PCDHAC2 Products</a> )
Background:	PCDHAC2 is a potential calcium-dependent cell-adhesion protein. It may be involved in the establishment and maintenance of specific neuronal connections in the brain. This gene is a member of the protocadherin alpha gene cluster, one of three related gene clusters tandemly linked on chromosome five that demonstrate an unusual genomic organization similar to that of B-cell and T-cell receptor gene clusters. The alpha gene cluster is composed of 15 cadherin

## Target Details

superfamily genes related to the mouse CNR genes and consists of 13 highly similar and 2 more distantly related coding sequences. The tandem array of 15 N-terminal exons, or variable exons, are followed by downstream C-terminal exons, or constant exons, which are shared by all genes in the cluster. The large, uninterrupted N-terminal exons each encode six cadherin ectodomains while the C-terminal exons encode the cytoplasmic domain. These neural cadherin-like cell adhesion proteins are integral plasma membrane proteins that most likely play a critical role in the establishment and function of specific cell-cell connections in the brain. Alternative splicing has been observed and additional variants have been suggested but their full-length nature has yet to be determined.

Molecular Weight: 105 kDa

Gene ID: 56134

NCBI Accession: [NP\\_061722](#)

UniProt: [Q9Y5I4](#)

## Application Details

Application Notes: PCDHAC2 antibody can be used for detection of PCDHAC2 by ELISA at 1:62500. PCDHAC2 antibody can be used for detection of PCDHAC2 by western blot at 1 µg/mL, and HRP conjugated secondary antibody should be diluted 1:50,000 - 100,000.

Restrictions: For Research Use only

## Handling

Format: Lyophilized

Reconstitution: Add 50 µL of distilled water. Final antibody concentration is 1 mg/mL.

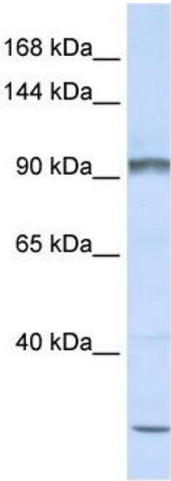
Concentration: 1 mg/mL

Buffer: Antibody is lyophilized in PBS buffer with 2 % sucrose.

Handling Advice: As with any antibody avoid repeat freeze-thaw cycles.

Storage: 4 °C/-20 °C

Storage Comment: For short periods of storage (days) store at 4 °C. For longer periods of storage, store PCDHAC2 antibody at -20 °C.



**Western Blotting**

**Image 1.**