

Datasheet for ABIN2459301 **anti-GALNTL1 antibody**

[Go to Product page](#)

1 Image

Overview

Quantity:	100 µL
Target:	GALNTL1
Reactivity:	Human, Rat
Host:	Rabbit
Clonality:	Polyclonal
Conjugate:	This GALNTL1 antibody is un-conjugated
Application:	Western Blotting (WB), ELISA

Product Details

Immunogen:	Antibody produced in rabbits immunized with a synthetic peptide corresponding a region of human GALNTL1.
Purification:	Antibody is purified by peptide affinity chromatography method.

Target Details

Target:	GALNTL1
Alternative Name:	GALNTL1 (GALNTL1 Products)
Background:	GALNTL1 belongs to the glycosyltransferase 2 family, GalNAc-T subfamily. It contains 1 ricin B-type lectin domain. GALNTL1 may catalyze the initial reaction in O-linked oligosaccharide biosynthesis, the transfer of an N-acetyl-D-galactosamine residue to a serine or threonine residue on the protein receptor.
Molecular Weight:	63 kDa

Target Details

Gene ID:	57452
NCBI Accession:	NP_065743
UniProt:	Q8N428

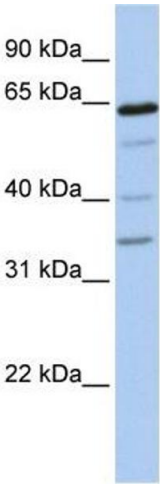
Application Details

Application Notes:	GALNTL1 antibody can be used for detection of GALNTL1 by ELISA at 1:62500. GALNTL1 antibody can be used for detection of GALNTL1 by western blot at 1 µg/mL, and HRP conjugated secondary antibody should be diluted 1:50,000 - 100,000.
Restrictions:	For Research Use only

Handling

Format:	Lyophilized
Reconstitution:	Add 50 µL of distilled water. Final antibody concentration is 1 mg/mL.
Concentration:	1 mg/mL
Buffer:	Antibody is lyophilized in PBS buffer with 2 % sucrose.
Handling Advice:	As with any antibody avoid repeat freeze-thaw cycles.
Storage:	4 °C/-20 °C
Storage Comment:	For short periods of storage (days) store at 4 °C. For longer periods of storage, store GALNTL1 antibody at -20 °C.

Images



Western Blotting

Image 1.