

Datasheet for ABIN2459318
anti-TMEM35 antibody[Go to Product page](#)

1 Image

Overview

Quantity:	100 µL
Target:	TMEM35
Reactivity:	Human, Mouse, Rat
Host:	Rabbit
Clonality:	Polyclonal
Conjugate:	This TMEM35 antibody is un-conjugated
Application:	Western Blotting (WB), ELISA

Product Details

Immunogen:	Antibody produced in rabbits immunized with a synthetic peptide corresponding a region of human TMEM35.
Purification:	Antibody is purified by peptide affinity chromatography method.

Target Details

Target:	TMEM35
Alternative Name:	TMEM35 (TMEM35 Products)
Background:	TMEM35 is a multi-pass membrane protein. The exact function of TMEM35 remains unknown.
Molecular Weight:	18 kDa
Gene ID:	59353
NCBI Accession:	NP_067650

Target Details

UniProt: [Q53FP2](#)

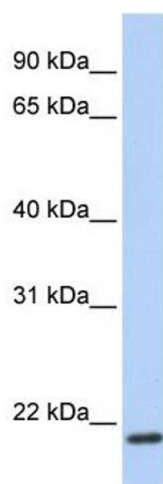
Application Details

Application Notes:	TMEM35 antibody can be used for detection of TMEM35 by ELISA at 1:12500. TMEM35 antibody can be used for detection of TMEM35 by western blot at 1 µg/mL, and HRP conjugated secondary antibody should be diluted 1:50,000 - 100,000.
Restrictions:	For Research Use only

Handling

Format:	Lyophilized
Reconstitution:	Add 50 µL of distilled water. Final antibody concentration is 1 mg/mL.
Concentration:	1 mg/mL
Buffer:	Antibody is lyophilized in PBS buffer with 2 % sucrose.
Handling Advice:	As with any antibody avoid repeat freeze-thaw cycles.
Storage:	4 °C/-20 °C
Storage Comment:	For short periods of storage (days) store at 4 °C. For longer periods of storage, store TMEM35 antibody at -20 °C.

Images



Western Blotting

Image 1.