

Datasheet for ABIN2459331  
**anti-Cadherin 24 antibody**[Go to Product page](#)

## 1 Image

## Overview

Quantity:	100 µL
Target:	Cadherin 24 (CDH24)
Reactivity:	Human, Mouse, Rat
Host:	Rabbit
Clonality:	Polyclonal
Conjugate:	This Cadherin 24 antibody is un-conjugated
Application:	ELISA, Western Blotting (WB)

## Product Details

Immunogen:	Antibody produced in rabbits immunized with a synthetic peptide corresponding a region of human CDH24.
Purification:	Antibody is purified by peptide affinity chromatography method.

## Target Details

Target:	Cadherin 24 (CDH24)
Alternative Name:	CDH24 ( <a href="#">CDH24 Products</a> )
Background:	Cadherins are calcium dependent cell adhesion proteins. They preferentially interact with themselves in a homophilic manner in connecting cells, cadherins may thus contribute to the sorting of heterogeneous cell types. Cadherin-24 mediate strong cell-cell adhesion.
Molecular Weight:	88 kDa
Gene ID:	64403

## Target Details

NCBI Accession:	<a href="#">NP_071923</a>
UniProt:	<a href="#">Q86UP0</a>
Pathways:	<a href="#">Cell-Cell Junction Organization</a>

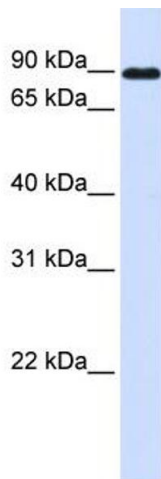
## Application Details

Application Notes:	CDH24 antibody can be used for detection of CDH24 by ELISA at 1:62500. CDH24 antibody can be used for detection of CDH24 by western blot at 1 µg/mL, and HRP conjugated secondary antibody should be diluted 1:50,000 - 100,000.
Restrictions:	For Research Use only

## Handling

Format:	Lyophilized
Reconstitution:	Add 50 µL of distilled water. Final antibody concentration is 1 mg/mL.
Concentration:	1 mg/mL
Buffer:	Antibody is lyophilized in PBS buffer with 2 % sucrose.
Handling Advice:	As with any antibody avoid repeat freeze-thaw cycles.
Storage:	4 °C/-20 °C
Storage Comment:	For short periods of storage (days) store at 4 °C. For longer periods of storage, store CDH24 antibody at -20 °C.

## Images



### Western Blotting

Image 1.