

Datasheet for ABIN2459336

anti-IGF-like family receptor 1 (IGFLR1) antibody[Go to Product page](#)**1** Image

Overview

Quantity:	100 µL
Target:	IGF-like family receptor 1 (IGFLR1)
Reactivity:	Human
Host:	Rabbit
Clonality:	Polyclonal
Conjugate:	Un-conjugated
Application:	Western Blotting (WB), ELISA

Product Details

Immunogen:	Antibody produced in rabbits immunized with a synthetic peptide corresponding a region of human TMEM149.
Purification:	Antibody is purified by peptide affinity chromatography method.

Target Details

Target:	IGF-like family receptor 1 (IGFLR1)
Alternative Name:	TMEM149 (IGFLR1 Products)
Background:	TMEM149 is a single-pass type I membrane protein. The exact function of TMEM149 remains unknown.
Molecular Weight:	38 kDa
Gene ID:	79713

Target Details

NCBI Accession: [NP_078936](#)

UniProt: [Q9H665](#)

Application Details

Application Notes: TMEM149 antibody can be used for detection of TMEM149 by ELISA at 1:12500. TMEM149 antibody can be used for detection of TMEM149 by western blot at 1 µg/mL, and HRP conjugated secondary antibody should be diluted 1:50,000 - 100,000.

Restrictions: For Research Use only

Handling

Format: Lyophilized

Reconstitution: Add 50 µL of distilled water. Final antibody concentration is 1 mg/mL.

Concentration: 1 mg/mL

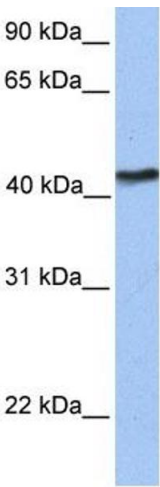
Buffer: Antibody is lyophilized in PBS buffer with 2 % sucrose.

Handling Advice: As with any antibody avoid repeat freeze-thaw cycles.

Storage: 4 °C/-20 °C

Storage Comment: For short periods of storage (days) store at 4 °C. For longer periods of storage, store TMEM149 antibody at -20 °C.

Images



Western Blotting

Image 1.