

Datasheet for ABIN2459362

anti-FIBCD1 antibody[Go to Product page](#)**1** Image

Overview

Quantity:	100 µL
Target:	FIBCD1
Reactivity:	Human, Mouse, Rat
Host:	Rabbit
Clonality:	Polyclonal
Conjugate:	This FIBCD1 antibody is un-conjugated
Application:	Western Blotting (WB), ELISA

Product Details

Immunogen:	Antibody produced in rabbits immunized with a synthetic peptide corresponding a region of human FIBCD1.
Purification:	Antibody is purified by peptide affinity chromatography method.

Target Details

Target:	FIBCD1
Alternative Name:	FIBCD1 (FIBCD1 Products)
Background:	FIBCD1 is a single-pass membrane protein. It contains 1 fibrinogen C-terminal domain. The exact function of FIBCD1 remains unknown.
Molecular Weight:	51 kDa
Gene ID:	84929

Target Details

NCBI Accession: [NP_116232](#)

UniProt: [Q8N539](#)

Application Details

Application Notes: FIBCD1 antibody can be used for detection of FIBCD1 by ELISA at 1:1562500. FIBCD1 antibody can be used for detection of FIBCD1 by western blot at 1 µg/mL, and HRP conjugated secondary antibody should be diluted 1:50,000 - 100,000.

Restrictions: For Research Use only

Handling

Format: Lyophilized

Reconstitution: Add 50 µL of distilled water. Final antibody concentration is 1 mg/mL.

Concentration: 1 mg/mL

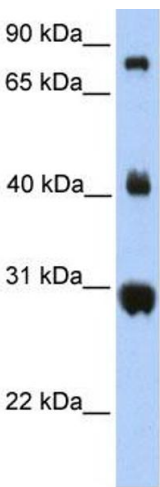
Buffer: Antibody is lyophilized in PBS buffer with 2 % sucrose.

Handling Advice: As with any antibody avoid repeat freeze-thaw cycles.

Storage: 4 °C/-20 °C

Storage Comment: For short periods of storage (days) store at 4 °C. For longer periods of storage, store FIBCD1 antibody at -20 °C.

Images



Western Blotting

Image 1.